



## UK Office

### Everest Biotech Ltd

Cherwell Innovation Centre  
77 Heyford Park  
Upper Heyford  
Oxfordshire  
OX25 5HD  
UK

Enquiries:

[info@everestbiotech.com](mailto:info@everestbiotech.com)

Sales:

[sales@everestbiotech.com](mailto:sales@everestbiotech.com)

Tech support:

[support@everestbiotech.com](mailto:support@everestbiotech.com)

Tel: +44 (0)1869 238326

[www.everestbiotech.com](http://www.everestbiotech.com)

**Research Use Only. Not for  
diagnostic or therapeutic use.**

## EB07440 - Goat Anti-XRCC4-like factor / NHEJ1 Antibody

Size: 100µg specific antibody in 200µl



### Target Protein

**Principal Names:** NHEJ1, XRCC4-like factor, nonhomologous end-joining factor 1, FLJ12610, XLF, Cernunnos

**Official Symbol:** NHEJ1

**Accession Number(s):** NP\_079058.1

**Human GeneID(s):** [79840](#)

### Immunogen

Peptide with sequence C-QRPQLSKVKRKKPR, from the C Terminus of the protein sequence according to NP\_079058.1.

Please note the [peptide](#) is available for sale.

### Purification and Storage

Purified from goat serum by ammonium sulphate precipitation followed by antigen affinity chromatography using the immunizing peptide.

Supplied at 0.5 mg/ml in Tris saline, 0.02% sodium azide, pH7.3 with 0.5% bovine serum albumin.

Aliquot and store at -20°C. Minimize freezing and thawing.

### Applications Tested

**Peptide ELISA:** antibody detection limit dilution 1:64000.

**Western blot:** Approx 38kDa band observed in lysates of Human Skin, Testis and Thyroid gland (calculated size of 33.3kDa according to NP\_079058.1). The observed molecular weight corresponds to findings with antibodies from other sources. The 38kDa band was successfully blocked by incubation with the immunizing peptide. Recommended concentration 0.1-0.3µg/ml.

**IHC:** In paraffin embedded Human Placenta shows nuclear staining in trophoblasts. Recommended concentration, 2.5-3.8µg/ml.

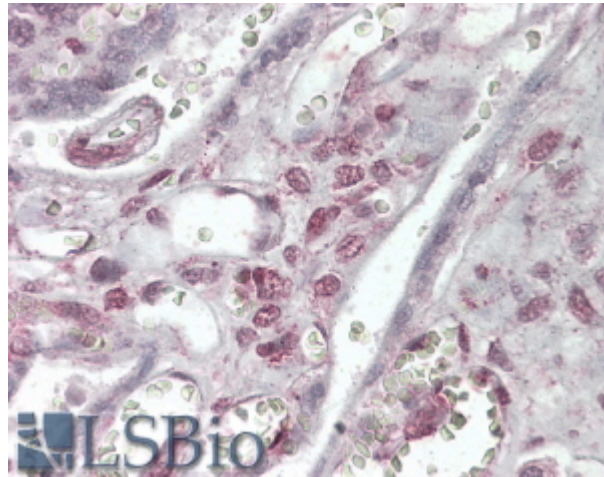
### Species Reactivity

**Tested:** Human

**Expected from sequence similarity:** Human, Dog



EB07440 (0.1µg/ml) staining of Human Thyroid lysate (35µg protein in RIPA buffer). Primary incubation was 1 hour. Detected by chemiluminescence.



EB07440 (3.8µg/ml) staining of paraffin embedded Human Placenta. Steamed antigen retrieval with citrate buffer pH 6, AP-staining.