



## UK Office

### Everest Biotech Ltd

Cherwell Innovation Centre  
77 Heyford Park  
Upper Heyford  
Oxfordshire  
OX25 5HD  
UK

Enquiries:

[info@everestbiotech.com](mailto:info@everestbiotech.com)

Sales:

[sales@everestbiotech.com](mailto:sales@everestbiotech.com)

Tech support:

[support@everestbiotech.com](mailto:support@everestbiotech.com)

Tel: +44 (0)1869 238326

[www.everestbiotech.com](http://www.everestbiotech.com)

**Research Use Only. Not for  
diagnostic or therapeutic use.**

## EB05997 - Goat Anti-USP20 / VDU2 Antibody

Size: 100µg specific antibody in 200µl



### Target Protein

**Principal Names:** USP20, VDU2, ubiquitin specific protease 20, KIAA1003, pVHL-interacting deubiquitinating enzyme 2, ubiquitin specific peptidase 20, LSFR3A

**Official Symbol:** USP20

**Accession Number(s):** NP\_006667.3

**Human GeneID(s):** [10868](#)

**Non-Human GeneID(s):** 74270 (mouse)

**Important Comments:** Reported variants represent identical protein (NP\_006667.3; NP\_001103773.2; NP\_001008563.2).

### Immunogen

Peptide with sequence C-HGEQKIEAETRAV, from the C Terminus of the protein sequence according to NP\_006667.3.

Please note the [peptide](#) is available for sale.

### Purification and Storage

Purified from goat serum by ammonium sulphate precipitation followed by antigen affinity chromatography using the immunizing peptide.

Supplied at 0.5 mg/ml in Tris saline, 0.02% sodium azide, pH7.3 with 0.5% bovine serum albumin.

Aliquot and store at -20°C. Minimize freezing and thawing.

### Applications Tested

**Peptide ELISA:** antibody detection limit dilution 1:4000.

**Western blot:** Approx 100kDa band observed in Human Tonsil lysates (calculated MW of 102kDa according to NP\_006667.3). Recommended concentration: 1-3µg/ml.

**IHC:** In paraffin embedded Human Lymph Node shows strongest staining in smooth muscle cells surrounding a vessel. Data obtained from a previous batch (different goat). Recommended concentration, 3 µg/ml.

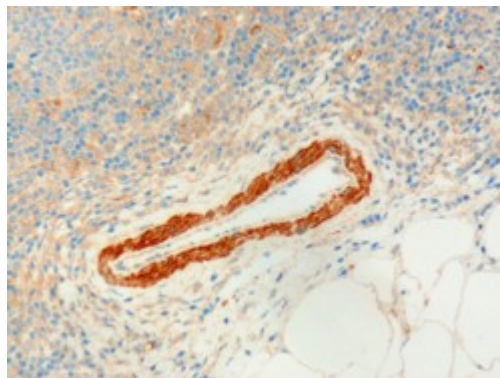
### Species Reactivity

**Tested:** Human

**Expected from sequence similarity:** Human, Mouse, Rat, Dog, Pig, Cow



EB05997 (1 $\mu$ g/ml) staining of Human Tonsil lysate (35 $\mu$ g protein in RIPA buffer). Primary incubation was 1 hour.  
Detected by chemiluminescence.



EB05997 (3 $\mu$ g/ml) staining of paraffin embedded Human Lymph Node. Microwaved antigen retrieval with Tris/EDTA buffer pH9, HRP-staining.