

## UK Office

### Everest Biotech Ltd

Cherwell Innovation Centre  
77 Heyford Park  
Upper Heyford  
Oxfordshire  
OX25 5HD  
UK

Enquiries:

[info@everestbiotech.com](mailto:info@everestbiotech.com)

Sales:

[sales@everestbiotech.com](mailto:sales@everestbiotech.com)

Tech support:

[support@everestbiotech.com](mailto:support@everestbiotech.com)

Tel: +44 (0)1869 238326

[www.everestbiotech.com](http://www.everestbiotech.com)

**Research Use Only. Not for  
diagnostic or therapeutic use.**

## EB09517 - Goat Anti-UBE2C / UBCH10 Antibody

Size: 100µg specific antibody in 200µl



### Target Protein

**Principal Names:** UBE2C, ubiquitin-conjugating enzyme E2C, UBCH10, dJ447F3.2, OTTHUMP00000031653, OTTHUMP00000031655, cyclin-selective ubiquitin carrier protein, mitotic-specific ubiquitin-conjugating enzyme, ubiquitin carrier protein E2-C, ubiquitin-protein ligase C

**Official Symbol:** UBE2C

**Accession Number(s):** NP\_008950.1; NP\_861515.1; NP\_861517.1

**Human GeneID(s):** [11065](#)

**Important Comments:** This antibody is expected to recognize isoforms 1 (NP\_008950.1), 2 (NP\_861515.1) and 4 (NP\_861517.1). Reported variants NP\_861517.1 and NP\_861518.1 represent identical protein.

### Immunogen

Peptide with sequence C-SGDKGISAFPESDN, from the internal region of the protein sequence according to NP\_008950.1; NP\_861515.1; NP\_861517.1.

Please note the [peptide](#) is available for sale.

### Purification and Storage

Purified from goat serum by ammonium sulphate precipitation followed by antigen affinity chromatography using the immunizing peptide.

Supplied at 0.5 mg/ml in Tris saline, 0.02% sodium azide, pH7.3 with 0.5% bovine serum albumin.

Aliquot and store at -20°C. Minimize freezing and thawing.

### Applications Tested

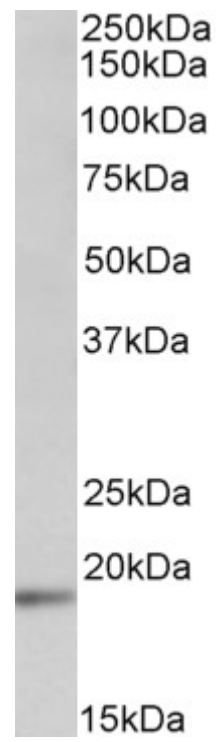
**Peptide ELISA:** antibody detection limit dilution 1:8000.

**Western blot:** Approx 19kDa band observed in lysates of cell lines HEK293 and HeLa (calculated MW of 19.7kDa according to NP\_008950.1). Recommended concentration: 1-3µg/ml.

### Species Reactivity

**Tested:** Human

**Expected from sequence similarity:** Human, Mouse, Rat, Dog, Cow



EB09517 (1 $\mu$ g/ml) staining of HEK293 lysate (35 $\mu$ g protein in RIPA buffer). Primary incubation was 1 hour.  
Detected by chemiluminescence.