



## UK Office

### Everest Biotech Ltd

Cherwell Innovation Centre  
77 Heyford Park  
Upper Heyford  
Oxfordshire  
OX25 5HD  
UK

Enquiries:

[info@everestbiotech.com](mailto:info@everestbiotech.com)

Sales:

[sales@everestbiotech.com](mailto:sales@everestbiotech.com)

Tech support:

[support@everestbiotech.com](mailto:support@everestbiotech.com)

Tel: +44 (0)1869 238326

[www.everestbiotech.com](http://www.everestbiotech.com)

**Research Use Only. Not for  
diagnostic or therapeutic use.**

## EB09831 - Goat Anti-TTLL4 Antibody

Size: 100µg specific antibody in 200µl



### Target Protein

**Principal Names:** KIAA0173, OTTHUMP00000164099, tubulin tyrosine ligase-like family, member 4, TTLL4

**Official Symbol:** TTLL4

**Accession Number(s):** NP\_055455.3

**Human GeneID(s):** [9654](#)

**Non-Human GeneID(s):** 67534 (mouse), 690512 (rat)

### Immunogen

Peptide with sequence C-RSSYRQKPYQQLE, from the internal region of the protein sequence according to NP\_055455.3.

Please note the [peptide](#) is available for sale.

### Purification and Storage

Purified from goat serum by ammonium sulphate precipitation followed by antigen affinity chromatography using the immunizing peptide.

Supplied at 0.5 mg/ml in Tris saline, 0.02% sodium azide, pH7.3 with 0.5% bovine serum albumin.

Aliquot and store at -20°C. Minimize freezing and thawing.

### Applications Tested

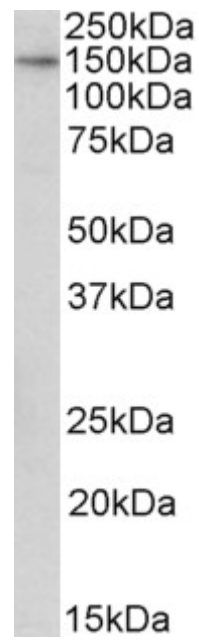
**Peptide ELISA:** antibody detection limit dilution 1:16000.

**Western blot:** Approx 150kDa band observed in lysates of cell line MDCK (calculated MW of 133kDa according to NP\_055455.3). Recommended concentration: 1-3µg/ml.

### Species Reactivity

**Tested:** Dog

**Expected from sequence similarity:** Human, Mouse, Rat, Dog, Cow



EB09831 (1µg/ml) staining of MDCK lysate (35µg protein in RIPA buffer). Primary incubation was 1 hour.  
Detected by chemiluminescence