



UK Office

Everest Biotech Ltd

Cherwell Innovation Centre
77 Heyford Park
Upper Heyford
Oxfordshire
OX25 5HD
UK

Enquiries:

info@everestbiotech.com

Sales:

sales@everestbiotech.com

Tech support:

support@everestbiotech.com

Tel: +44 (0)1869 238326

www.everestbiotech.com

**Research Use Only. Not for
diagnostic or therapeutic use.**

EB09902 - Goat Anti-TRIM71 (aa409-419) Antibody

Size: 100µg specific antibody in 200µl



Target Protein

Principal Names: abnormal cell LINEage LIN-41, homolog of C. elegans Lin-41, LIN41, LIN-41, tripartite motif-containing 71, TRIM71

Official Symbol: TRIM71

Accession Number(s): NP_001034200.1

Human GeneID(s): [131405](#)

Non-Human GeneID(s): 636331 (mouse), 301042 (rat)

Immunogen

Peptide with sequence C-NKLESTISAVQ, from the internal region of the protein sequence according to NP_001034200.1.

Please note the [peptide](#) is available for sale.

Purification and Storage

Purified from goat serum by ammonium sulphate precipitation followed by antigen affinity chromatography using the immunizing peptide.

Supplied at 0.5 mg/ml in Tris saline, 0.02% sodium azide, pH7.3 with 0.5% bovine serum albumin.

Aliquot and store at -20°C. Minimize freezing and thawing.

Applications Tested

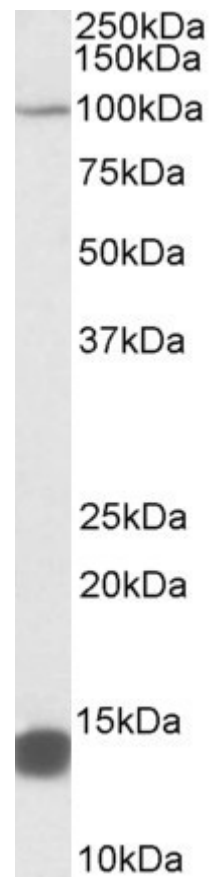
Peptide ELISA: antibody detection limit dilution 1:32000.

Western blot: Approx 100kDa band observed in lysates of cell line NIH3T3 (calculated MW of 93.4kDa according to Human NP_001034200.1 and of 92.1kDa according to Mouse NP_001035968.1). Recommended concentration: 1-3µg/ml. An additional band of unknown identity was also consistently observed at 14kDa. This band was successfully blocked by incubation with the immunizing peptide. We would appreciate any feedback from people in the field - have any such results been reported with other antibodies/lysates? Have any further splice variants/modified forms been reported?

Species Reactivity

Tested: Mouse

Expected from sequence similarity: Human, Mouse, Rat, Dog, Cow



EB09902 (0.5µg/ml) staining of NIH3T3 lysate (35µg protein in RIPA buffer). Primary incubation was 1 hour.
Detected by chemiluminescence.