

UK Office

Everest Biotech Ltd

Cherwell Innovation Centre
77 Heyford Park
Upper Heyford
Oxfordshire
OX25 5HD
UK

Enquiries:

info@everestbiotech.com

Sales:

sales@everestbiotech.com

Tech support:

support@everestbiotech.com

Tel: +44 (0)1869 238326

www.everestbiotech.com

**Research Use Only. Not for
diagnostic or therapeutic use.**

EB07636 - Goat Anti-TMP21 / TMED10 Antibody

Size: 100µg specific antibody in 200µl



Target Protein

Principal Names: TMED10, transmembrane emp24-like trafficking protein 10 (yeast), P24(DELTA), S31I125, S31III125, TMP21, Tmp-21-I, 21 kDa transmembrane trafficking protein, transmembrane emp24 domain-containing protein 10

Official Symbol: TMED10

Accession Number(s): NP_006818.3

Human GeneID(s): [10972](#)

Non-Human GeneID(s): 68581 (mouse), 84599 (rat)

Immunogen

Peptide with sequence C-YLRRFFKAKKLIE, from the C Terminus of the protein sequence according to NP_006818.3.

Please note the [peptide](#) is available for sale.

Purification and Storage

Purified from goat serum by ammonium sulphate precipitation followed by antigen affinity chromatography using the immunizing peptide.

Supplied at 0.5 mg/ml in Tris saline, 0.02% sodium azide, pH7.3 with 0.5% bovine serum albumin.

Aliquot and store at -20°C. Minimize freezing and thawing.

Applications Tested

Peptide ELISA: antibody detection limit dilution 1:1000.

Western blot: Preliminary experiments gave an approx 75kDa band in Rat Pancreas lysates after 1µg/ml antibody staining. Please note that currently we cannot find an explanation in the literature for the band we observe given the calculated size of 25.0kDa according to NP_006818.3. The 75kDa band was successfully blocked by incubation with the immunizing peptide. Primary incubation 1 hour at room temperature.

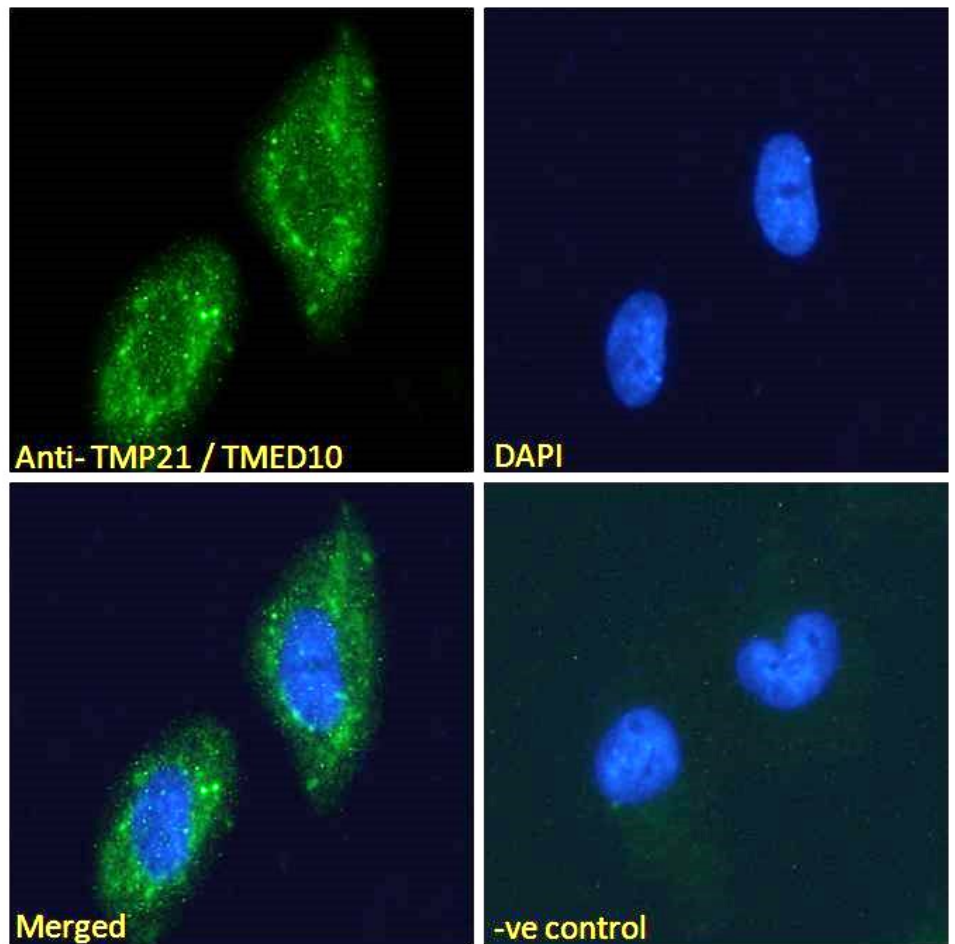
Immunofluorescence: Expression of the protein seen in the Golgi and cytoplasm of Glioblastoma U251 cells. Recommended concentration: 10µg/ml.

Flow Cytometry: Flow cytometric analysis of HeLa cells. Recommended concentration: 10ug/ml.

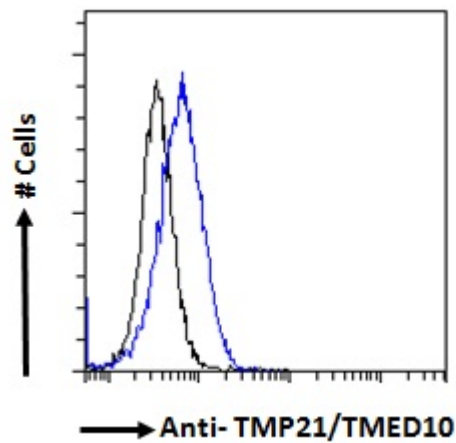
Species Reactivity

Tested: Human

Expected from sequence similarity: Human, Mouse, Rat, Dog, Cow



EB07636 Immunofluorescence analysis of paraformaldehyde fixed U251 cells, permeabilized with 0.15% Triton. Primary incubation 1hr (10ug/ml) followed by Alexa Fluor 488 secondary antibody (2ug/ml), showing Golgi/cytoplasmic staining. The nuclear stain is DAPI (blue). Negative control: Unimmunized goat IgG (10ug/ml) followed by Alexa Fluor 488 secondary antibody (2ug/ml).



EB07636 Flow cytometric analysis of paraformaldehyde fixed HeLa cells (blue line), permeabilized with 0.5% Triton. Primary incubation 1hr (10ug/ml) followed by Alexa Fluor 488 secondary antibody (1ug/ml). IgG control: Unimmunized goat IgG (black line) followed by Alexa Fluor 488 secondary antibody.