



UK Office

Everest Biotech Ltd

Cherwell Innovation Centre
77 Heyford Park
Upper Heyford
Oxfordshire
OX25 5HD
UK

Enquiries:

info@everestbiotech.com

Sales:

sales@everestbiotech.com

Tech support:

support@everestbiotech.com

Tel: +44 (0)1869 238326

www.everestbiotech.com

**Research Use Only. Not for
diagnostic or therapeutic use.**

EB10492 - Goat Anti-TH1L Antibody

Size: 100µg specific antibody in 200µl



Target Protein

Principal Names: HSPC130, negative elongation factor proteins C and D, NELF-C, NELF-D, TH1, TH1 drosophila homolog, TH1-like (Drosophila), TH1-like protein, trihydrophobin 1, TH1L

Official Symbol: TH1L

Accession Number(s): NP_945327.1

Human GeneID(s): [51497](#)

Non-Human GeneID(s): 57314 (mouse)

Immunogen

Peptide with sequence C-NKRVSINKDE, from the internal region of the protein sequence according to NP_945327.1.

Please note the [peptide](#) is available for sale.

Purification and Storage

Purified from goat serum by ammonium sulphate precipitation followed by antigen affinity chromatography using the immunizing peptide.

Supplied at 0.5 mg/ml in Tris saline, 0.02% sodium azide, pH7.3 with 0.5% bovine serum albumin.

Aliquot and store at -20°C. Minimize freezing and thawing.

Applications Tested

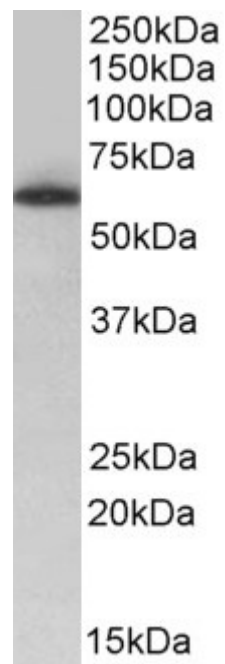
Peptide ELISA: antibody detection limit dilution 1:16000.

Western blot: Approx 60kDa band observed in nuclear lysates of cell line Jurkat (calculated MW of 66.2kDa according to NP_945327.1). Recommended concentration: 0.5-2µg/ml.

Species Reactivity

Tested: Human

Expected from sequence similarity: Human, Mouse, Dog, Cow, Pig



EB10492 (0.5µg/ml) staining of nuclear Jurkat lysate (35µg protein in RIPA buffer). Primary incubation was 1 hour. Detected by chemiluminescence.