



UK Office

Everest Biotech Ltd

Cherwell Innovation Centre
77 Heyford Park
Upper Heyford
Oxfordshire
OX25 5HD
UK

Enquiries:

info@everestbiotech.com

Sales:

sales@everestbiotech.com

Tech support:

support@everestbiotech.com

Tel: +44 (0)1869 238326

www.everestbiotech.com

**Research Use Only. Not for
diagnostic or therapeutic use.**

EB05614 - Goat Anti-TBPL1 / TLF / TRF2 Antibody

Size: 100µg specific antibody in 200µl



Target Protein

Principal Names: TBPL1, TRF2, TBP-like 1, TLP, STUD, MGC:8389, MGC:9620, TBP-like protein, TBP-related factor 2, 21-kDa TBP-like protein, second TBP of unique DNA, TATA box binding protein-related factor 2, TLF

Official Symbol: TBPL1

Accession Number(s): NP_004856.1

Human GeneID(s): [9519](#)

Non-Human GeneID(s): 237336 (mouse)

Immunogen

Peptide with sequence C-QIYPFVFESRKEIL, from the C Terminus of the protein sequence according to NP_004856.1.

Please note the [peptide](#) is available for sale.

Purification and Storage

Purified from goat serum by ammonium sulphate precipitation followed by antigen affinity chromatography using the immunizing peptide.

Supplied at 0.5 mg/ml in Tris saline, 0.02% sodium azide, pH7.3 with 0.5% bovine serum albumin.

Aliquot and store at -20°C. Minimize freezing and thawing.

Applications Tested

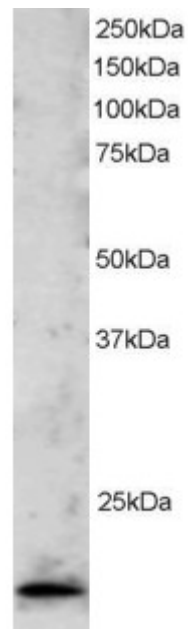
Peptide ELISA: antibody detection limit dilution 1:4000.

Western blot: Approx 20kDa band seen in Jurkat lysate [Predicted MW of 20kDa according to NP_004856]. Recommended for use at 1-3µg/ml.

Species Reactivity

Tested: Human

Expected from sequence similarity: Human, Mouse, Rat, Dog, Cow



EB05614 staining (2 μ g/ml) of Jurkat lysate (RIPA buffer, 30 μ g total protein per lane). Primary incubated for 1 hour. Detected by western blot using chemiluminescence.