



UK Office

Everest Biotech Ltd

Cherwell Innovation Centre
77 Heyford Park
Upper Heyford
Oxfordshire
OX25 5HD
UK

Enquiries:

info@everestbiotech.com

Sales:

sales@everestbiotech.com

Tech support:

support@everestbiotech.com

Tel: +44 (0)1869 238326

www.everestbiotech.com

**Research Use Only. Not for
diagnostic or therapeutic use.**

EB10884 - Goat Anti-STS2 / TULA (aa470-482) Antibody

Size: 100µg specific antibody in 200µl



Target Protein

Principal Names: UBASH3A, ubiquitin associated and SH3 domain containing A, CLIP4, STS-2, TULA, OTTHUMP00000109368, T-cell ubiquitin ligand protein, cbl-interacting protein 4, suppressor of T-cell receptor signaling 2

Official Symbol: UBASH3A

Accession Number(s): NP_061834.1; NP_001001895.1

Human GeneID(s): [53347](#)

Important Comments: This antibody is expected to recognize both reported isoforms (NP_061834.1; NP_001001895.1).

Immunogen

Peptide with sequence C-DSGIRISSVFASP, from the internal region of the protein sequence according to NP_061834.1; NP_001001895.1.

Please note the [peptide](#) is available for sale.

Purification and Storage

Purified from goat serum by ammonium sulphate precipitation followed by antigen affinity chromatography using the immunizing peptide.

Supplied at 0.5 mg/ml in Tris saline, 0.02% sodium azide, pH7.3 with 0.5% bovine serum albumin.

Aliquot and store at -20°C. Minimize freezing and thawing.

Applications Tested

Peptide ELISA: antibody detection limit dilution 1:8000.

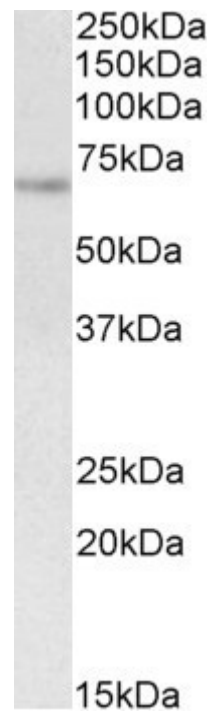
Western blot: Approx 70kDa band observed in Human Spleen lysates (calculated MW of 69.8kDa according to NP_001001895.1). Recommended concentration: 1-3µg/ml.

IHC: In paraffin embedded Human Breast shows perinuclear staining in the epithelial cells of the lobules. Recommended concentration, 3-5µg/ml.

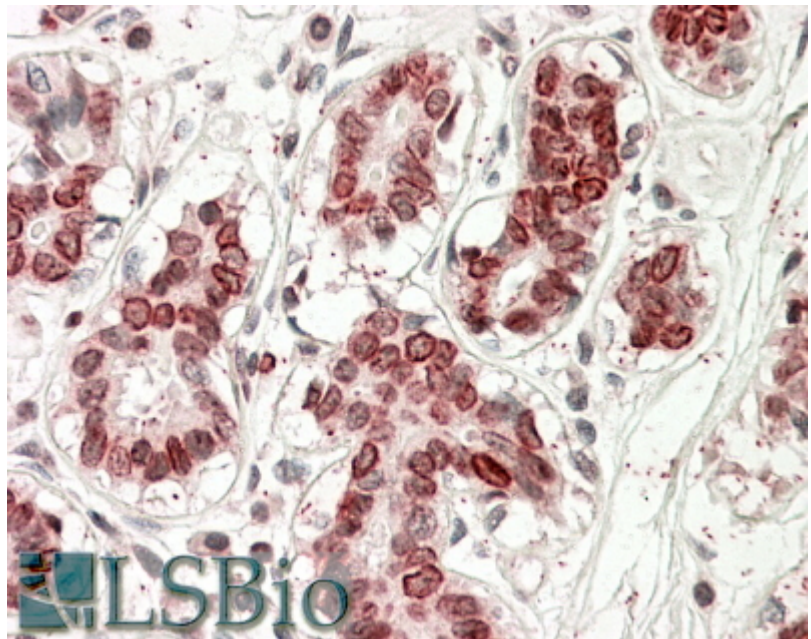
Species Reactivity

Tested: Human

Expected from sequence similarity: Human



EB10884 (1 μ g/ml) staining of Human Spleen lysate (35 μ g protein in RIPA buffer). Primary incubation was 1 hour. Detected by chemiluminescence.



EB10884 (3.8 μ g/ml) staining of paraffin embedded Human Breast. Steamed antigen retrieval with citrate buffer pH 6, AP-staining.