



## UK Office

### Everest Biotech Ltd

Cherwell Innovation Centre  
77 Heyford Park  
Upper Heyford  
Oxfordshire  
OX25 5HD  
UK

Enquiries:

[info@everestbiotech.com](mailto:info@everestbiotech.com)

Sales:

[sales@everestbiotech.com](mailto:sales@everestbiotech.com)

Tech support:

[support@everestbiotech.com](mailto:support@everestbiotech.com)

Tel: +44 (0)1869 238326

[www.everestbiotech.com](http://www.everestbiotech.com)

**Research Use Only. Not for  
diagnostic or therapeutic use.**

## EB05903 - Goat Anti-SNX15 Antibody

Size: 100µg specific antibody in 200µl



### Target Protein

**Principal Names:** SNX15, sorting nexin 15, HSAF001435, clone iota unknown protein, hCG\_23393, OTTHUMP00000035515

**Official Symbol:** SNX15

**Accession Number(s):** NP\_037438.2; NP\_680086.2

**Human GeneID(s):** [29907](#)

**Important Comments:** This antibody is expected to recognise both Human isoforms according to NP\_037438.2 and NP\_680086.2.

### Immunogen

Peptide with sequence C-EEILRLHLSQLPP, from the C Terminus of the protein sequence according to NP\_037438.2; NP\_680086.2.

Please note the [peptide](#) is available for sale.

### Purification and Storage

Purified from goat serum by ammonium sulphate precipitation followed by antigen affinity chromatography using the immunizing peptide.

Supplied at 0.5 mg/ml in Tris saline, 0.02% sodium azide, pH7.3 with 0.5% bovine serum albumin.

Aliquot and store at -20°C. Minimize freezing and thawing.

### Applications Tested

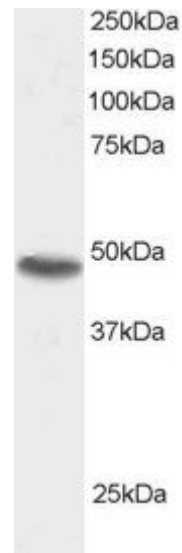
**Peptide ELISA:** antibody detection limit dilution 1:8000.

**Western blot:** Approx 48kDa band seen in Human Kidney lysates and in lysates of cell line HEK293 (calculated MW 38.2kDa according to NP\_037438.2). Recommended for use at 0.2-1µg/ml. Note: A single approx 30-35kDa band (probably representing the shorter isoform) was observed in Human Heart.

### Species Reactivity

**Tested:** Human

**Expected from sequence similarity:** Human



EB05903 staining (0.5µg/ml) of 293 lysate (RIPA buffer, 30µg total protein per lane). Primary incubated for 1 hour. Detected by western blot using chemiluminescence.