



UK Office

Everest Biotech Ltd

Cherwell Innovation Centre
77 Heyford Park
Upper Heyford
Oxfordshire
OX25 5HD
UK

Enquiries:

info@everestbiotech.com

Sales:

sales@everestbiotech.com

Tech support:

support@everestbiotech.com

Tel: +44 (0)1869 238326

www.everestbiotech.com

**Research Use Only. Not for
diagnostic or therapeutic use.**

EB07287 - Goat Anti-SLIT2 Antibody

Size: 100µg specific antibody in 200µl



Target Protein

Principal Names: SLIT2, slit homolog 2 (Drosophila), HGNC:11086, SLIL3, Slit-2

Official Symbol: SLIT2

Accession Number(s): NP_004778.1

Human GeneID(s): [9353](#)

Non-Human GeneID(s): 20563 (mouse), 360272 (rat)

Immunogen

Peptide with sequence DDCQDNKCKNGAH, from the internal region of the protein sequence according to NP_004778.1.

Please note the [peptide](#) is available for sale.

Purification and Storage

Purified from goat serum by ammonium sulphate precipitation followed by antigen affinity chromatography using the immunizing peptide.

Supplied at 0.5 mg/ml in Tris saline, 0.02% sodium azide, pH7.3 with 0.5% bovine serum albumin.

Aliquot and store at -20°C. Minimize freezing and thawing.

Applications Tested

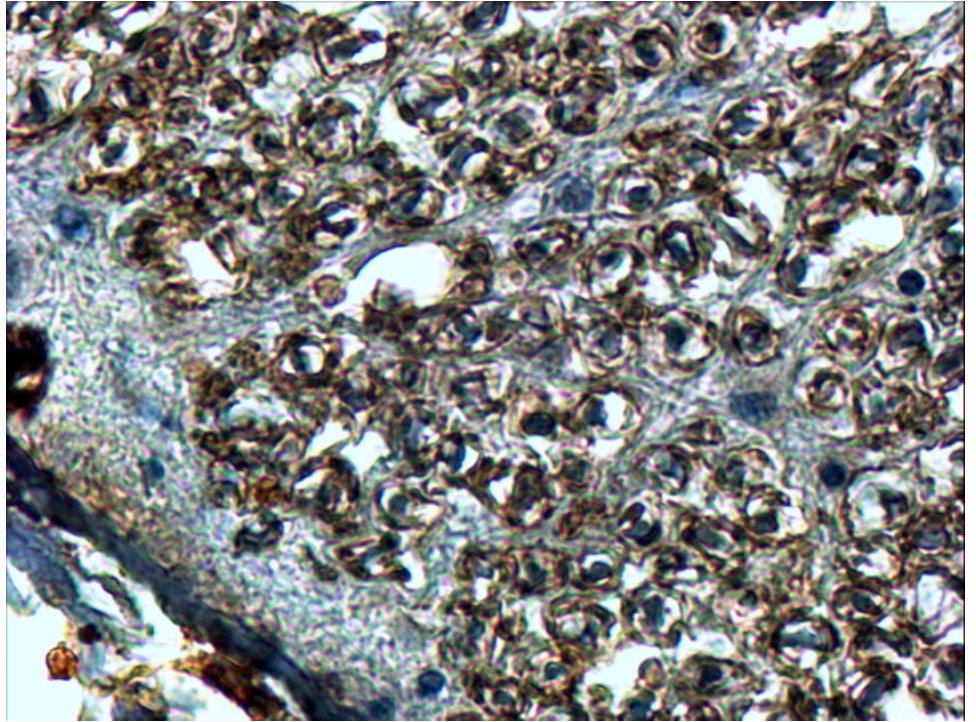
Peptide ELISA: antibody detection limit dilution 1:1000.

IHC: In paraffin embedded Human Spinal Cord shows staining of the cellular membrane in the bundles of sensory fibres. Recommended concentration, 4-8µg/ml.

Species Reactivity

Tested: Human

Expected from sequence similarity: Human, Mouse, Rat, Dog



EB07287 (4µg/ml) staining of paraffin embedded Human Spinal Cord. Steamed antigen retrieval with Tris/EDTA buffer pH 9, HRP-staining.