



## UK Office

### Everest Biotech Ltd

Cherwell Innovation Centre  
77 Heyford Park  
Upper Heyford  
Oxfordshire  
OX25 5HD  
UK

Enquiries:

[info@everestbiotech.com](mailto:info@everestbiotech.com)

Sales:

[sales@everestbiotech.com](mailto:sales@everestbiotech.com)

Tech support:

[support@everestbiotech.com](mailto:support@everestbiotech.com)

Tel: +44 (0)1869 238326

[www.everestbiotech.com](http://www.everestbiotech.com)

**Research Use Only. Not for  
diagnostic or therapeutic use.**

## EB09603 - Goat Anti-SKA3 Antibody

Size: 100µg specific antibody in 200µl



### Target Protein

**Principal Names:** C13orf3, chromosome 13 open reading frame 3, MGC4832, RAMA1, SKA3

**Official Symbol:** C13orf3

**Accession Number(s):** NP\_659498.3

**Human GeneID(s):** [221150](#)

**Non-Human GeneID(s):** 219114 (mouse), 361047 (rat)

### Immunogen

Peptide with sequence C-PLSKTNSSSNDLE, from the internal region of the protein sequence according to NP\_659498.3.

Please note the [peptide](#) is available for sale.

### Purification and Storage

Purified from goat serum by ammonium sulphate precipitation followed by antigen affinity chromatography using the immunizing peptide.

Supplied at 0.5 mg/ml in Tris saline, 0.02% sodium azide, pH7.3 with 0.5% bovine serum albumin.

Aliquot and store at -20°C. Minimize freezing and thawing.

### Applications Tested

**Peptide ELISA:** antibody detection limit dilution 1:64000.

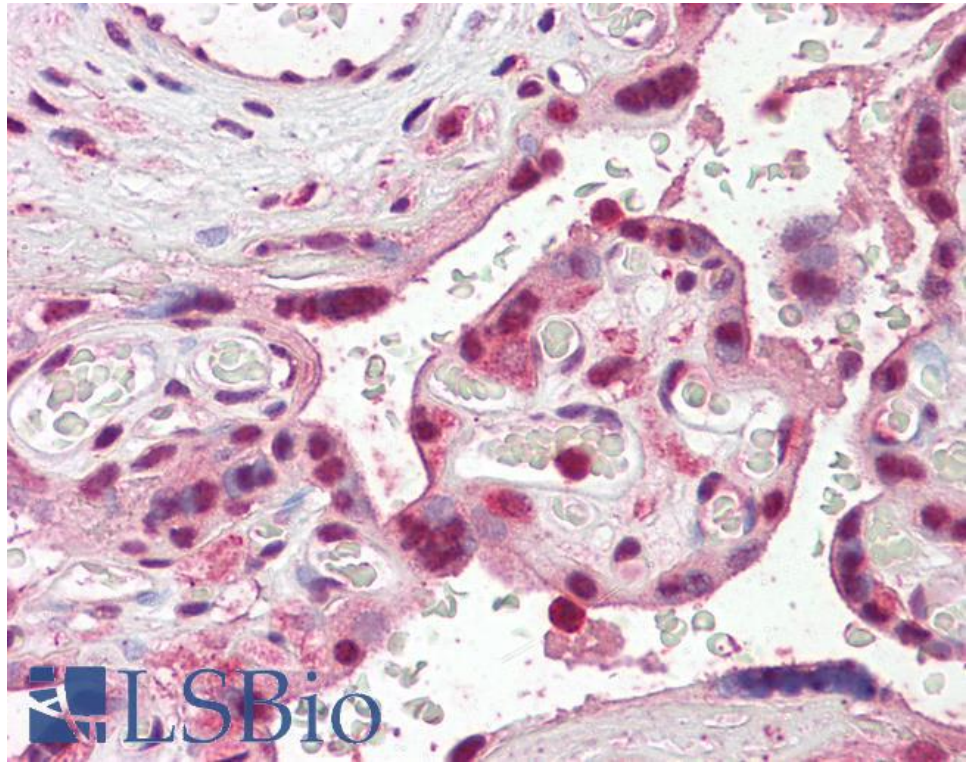
**Western blot:** Preliminary experiments gave an approx 35kDa and 150kDa band in HeLa lysates after 2µg/ml antibody staining. Please note that currently we cannot find an explanation in the literature for the bands we observe given the calculated size of 46.4kDa according to NP\_659498.3. Both bands were successfully blocked by incubation with the immunizing peptide.

**IHC:** Paraffin embedded Human Placenta. Recommended concentration: 3.75µg/ml.

### Species Reactivity

**Tested:** Human

**Expected from sequence similarity:** Human, Mouse, Rat, Dog



EB09603 (3.75µg/ml) staining of paraffin embedded Human Placenta. Steamed antigen retrieval with citrate buffer pH 6, AP-staining.