



UK Office

Everest Biotech Ltd

Cherwell Innovation Centre
77 Heyford Park
Upper Heyford
Oxfordshire
OX25 5HD
UK

Enquiries:

info@everestbiotech.com

Sales:

sales@everestbiotech.com

Tech support:

support@everestbiotech.com

Tel: +44 (0)1869 238326

www.everestbiotech.com

**Research Use Only. Not for
diagnostic or therapeutic use.**

EB10569 - Goat Anti-SIM2 Antibody

Size: 100µg specific antibody in 200µl



Target Protein

Principal Names: SIM2, single-minded homolog 2 (Drosophila), MGC119447, SIM, bHLHe15, OTTHUMP00000109044, class E basic helix-loop-helix protein 15, single-minded homolog 2, single-minded homolog 2, short isoform

Official Symbol: SIM2

Accession Number(s): NP_005060.1; NP_033664.2

Human GeneID(s): [6493](#)

Non-Human GeneID(s): 20465 (mouse), 304071 (rat)

Important Comments: This antibody is expected to recognize all reported isoforms (NP_005060.1; NP_033664.2).

Immunogen

Peptide with sequence C-SDLLYTPSYS, from the internal region of the protein sequence according to NP_005060.1; NP_033664.2.

Please note the [peptide](#) is available for sale.

Purification and Storage

Purified from goat serum by ammonium sulphate precipitation followed by antigen affinity chromatography using the immunizing peptide.

Supplied at 0.5 mg/ml in Tris saline, 0.02% sodium azide, pH7.3 with 0.5% bovine serum albumin.

Aliquot and store at -20°C. Minimize freezing and thawing.

Applications Tested

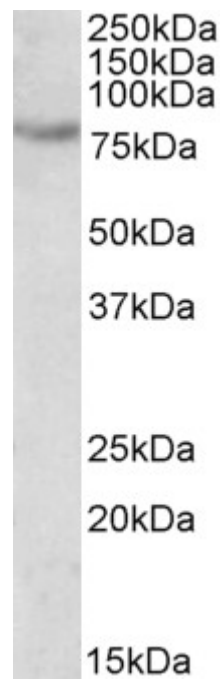
Peptide ELISA: antibody detection limit dilution 1:1000.

Western blot: Approx 80kDa band observed in fetal Mouse Kidney lysates (calculated MW of 73.2kDa according to Human NP_005060.1) and 72.5kDa according to Mouse NP_035507.2. Recommended concentration: 0.5-2µg/ml.

Species Reactivity

Tested: Mouse

Expected from sequence similarity: Human, Mouse, Rat



EB10569 (0.5 μ g/ml) staining of fetal Mouse kidney lysate (35 μ g protein in RIPA buffer). Primary incubation was 1 hour. Detected by chemiluminescence.