



UK Office

Everest Biotech Ltd

Cherwell Innovation Centre
77 Heyford Park
Upper Heyford
Oxfordshire
OX25 5HD
UK

Enquiries:

info@everestbiotech.com

Sales:

sales@everestbiotech.com

Tech support:

support@everestbiotech.com

Tel: +44 (0)1869 238326

www.everestbiotech.com

**Research Use Only. Not for
diagnostic or therapeutic use.**

EB09072 - Goat Anti-SH2D4A Antibody

Size: 100µg specific antibody in 200µl



Target Protein

Principal Names: SH2D4A, SH2 domain containing 4A, FLJ20967, SH2A

Official Symbol: SH2D4A

Accession Number(s): NP_071354.2

Human GeneID(s): [63898](#)

Immunogen

Peptide with sequence C-HQKKESMKKKQDE, from the internal region of the protein sequence according to NP_071354.2.

Please note the [peptide](#) is available for sale.

Purification and Storage

Purified from goat serum by ammonium sulphate precipitation followed by antigen affinity chromatography using the immunizing peptide.

Supplied at 0.5 mg/ml in Tris saline, 0.02% sodium azide, pH7.3 with 0.5% bovine serum albumin.

Aliquot and store at -20°C. Minimize freezing and thawing.

Applications Tested

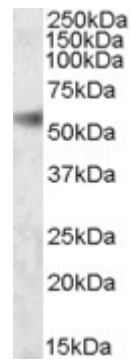
Peptide ELISA: antibody detection limit dilution 1:1000.

Western blot: Approx. 55kDa band observed in Human Kidney lysates (calculated MW of 52.7kDa according to NP_071354.2). Recommended concentration: 0.1-0.3µg/ml.

Species Reactivity

Tested: Human

Expected from sequence similarity: Human, Dog



EB09072 (0.1µg/ml) staining of Human Kidney lysate (35µg protein in RIPA buffer). Primary incubation was 1 hour. Detected by chemiluminescence.