



UK Office

Everest Biotech Ltd

Cherwell Innovation Centre
77 Heyford Park
Upper Heyford
Oxfordshire
OX25 5HD
UK

Enquiries:

info@everestbiotech.com

Sales:

sales@everestbiotech.com

Tech support:

support@everestbiotech.com

Tel: +44 (0)1869 238326

www.everestbiotech.com

**Research Use Only. Not for
diagnostic or therapeutic use.**

EB06868-B - Goat Anti-SDHB, Biotinylated Antibody

Size: 100µg specific antibody in 200µl



Target Protein

Principal Names: SDHB, succinate dehydrogenase complex, subunit B, iron sulfur (Ip), CWS2, IP, PGL4, SDH, SDH1, SDH2, SDHIP, iron-sulfur subunit of complex II, FLJ92337

Official Symbol: SDHB

Accession Number(s): NP_002991.2

Human GeneID(s): [6390](#)

Immunogen

Peptide with sequence C-ATYKEKKASV., from the C Terminus of the protein sequence according to NP_002991.2.

Please note the [peptide](#) is available for sale.

Purification and Storage

Purified from goat serum by ammonium sulphate precipitation followed by antigen affinity chromatography using the immunizing peptide.

Supplied at 0.5 mg/ml in Tris saline, 0.02% sodium azide, pH7.3 with 0.5% bovine serum albumin.

Aliquot and store at -20°C. Minimize freezing and thawing.

Applications Tested

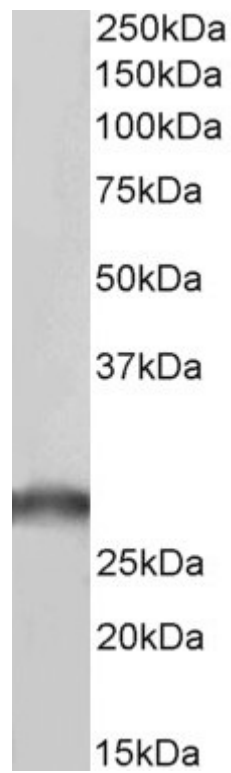
Peptide ELISA: antibody detection limit dilution 1:32000.

Western blot: Approx 28kDa band observed in Human Liver lysates (calculated MW of 31.6kDa according to NP_002991.1). See non-biotinylated parental product's datasheet for further QC data. Recommended concentration: 0.1-0.3µg/ml.

Species Reactivity

Tested: Human

Expected from sequence similarity: Human



Biotinylated EB06868 (0.2µg/ml) staining of Human Liver lysate (35µg protein in RIPA buffer), exactly mirroring its parental non-biotinylated product. Primary incubation was 1 hour. Detected by chemiluminescence, using streptavidin-HRP and using NAP blocker as a substitute for skimmed milk.