



UK Office

Everest Biotech Ltd

Cherwell Innovation Centre
77 Heyford Park
Upper Heyford
Oxfordshire
OX25 5HD
UK

Enquiries:

info@everestbiotech.com

Sales:

sales@everestbiotech.com

Tech support:

support@everestbiotech.com

Tel: +44 (0)1869 238326

www.everestbiotech.com

**Research Use Only. Not for
diagnostic or therapeutic use.**

EB08952 - Goat Anti-SCNN1D Antibody

Size: 100µg specific antibody in 200µl



Target Protein

Principal Names: SCNN1D, sodium channel, nonvoltage-gated 1, delta, ENaCd, ENaCdelta, MGC149710, MGC149711, SCNED, dNaCh, sodium channel nonvoltage-gated 1 delta, sodium channel, voltage-gated, type I, delta polypeptide

Official Symbol: SCNN1D

Accession Number(s): NP_002969.2

Human GeneID(s): [6339](#)

Immunogen

Peptide with sequence C-AGPQPLETLDT, from the C Terminus of the protein sequence according to NP_002969.2.

Please note the [peptide](#) is available for sale.

Purification and Storage

Purified from goat serum by ammonium sulphate precipitation followed by antigen affinity chromatography using the immunizing peptide.

Supplied at 0.5 mg/ml in Tris saline, 0.02% sodium azide, pH7.3 with 0.5% bovine serum albumin.

Aliquot and store at -20°C. Minimize freezing and thawing.

Applications Tested

Peptide ELISA: antibody detection limit dilution 1:16000.

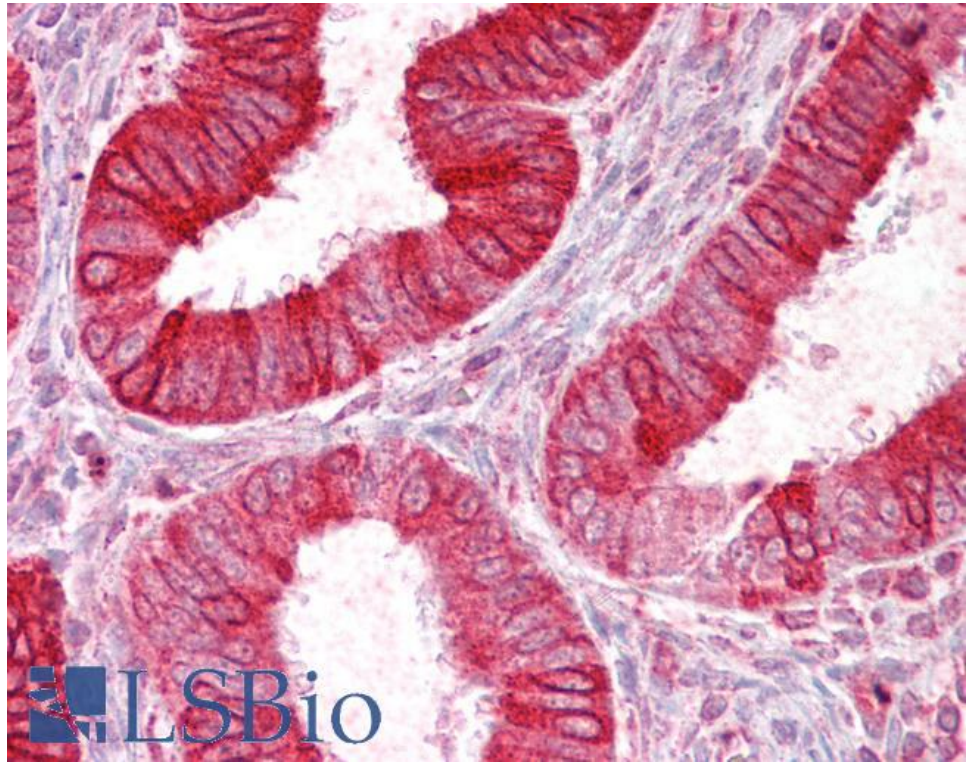
Western blot: Preliminary experiments in Human Pancreas and Thymus lysates gave no specific signal but low background (at antibody concentration up to 1µg/ml).

IHC: Paraffin embedded Human Uterus. Recommended concentration: 2.5µg/ml.

Species Reactivity

Tested: Human

Expected from sequence similarity: Human



EB08952 (2.5µg/ml) staining of paraffin embedded Human Uterus. Steamed antigen retrieval with citrate buffer pH 6, AP-staining.