

## UK Office

### Everest Biotech Ltd

Cherwell Innovation Centre  
77 Heyford Park  
Upper Heyford  
Oxfordshire  
OX25 5HD  
UK

Enquiries:

[info@everestbiotech.com](mailto:info@everestbiotech.com)

Sales:

[sales@everestbiotech.com](mailto:sales@everestbiotech.com)

Tech support:

[support@everestbiotech.com](mailto:support@everestbiotech.com)

Tel: +44 (0)1869 238326

[www.everestbiotech.com](http://www.everestbiotech.com)

**Research Use Only. Not for  
diagnostic or therapeutic use.**

## EB07902 - Goat Anti-SAR1B / SARA2 Antibody

Size: 100µg specific antibody in 200µl



### Target Protein

**Principal Names:** SAR1B, SARA2, SAR1 gene homolog B (S. cerevisiae), CMRD, GTBPB, 2310075M17Rik, GTP-binding protein Sara, SAR1a gene homolog 2

**Official Symbol:** SAR1B

**Accession Number(s):** NP\_001028675.1; NP\_057187.1

**Human GeneID(s):** [51128](#)

**Non-Human GeneID(s):** 66397 (mouse), 287276 (rat)

**Important Comments:** Both reported variants (NP\_001028675.1 and NP\_057187.1) represent identical protein

### Immunogen

Peptide with sequence C-DHERLLESKEELD, from the internal region of the protein sequence according to NP\_001028675.1; NP\_057187.1.

Please note the [peptide](#) is available for sale.

### Purification and Storage

Purified from goat serum by ammonium sulphate precipitation followed by antigen affinity chromatography using the immunizing peptide.

Supplied at 0.5 mg/ml in Tris saline, 0.02% sodium azide, pH7.3 with 0.5% bovine serum albumin.

Aliquot and store at -20°C. Minimize freezing and thawing.

### Applications Tested

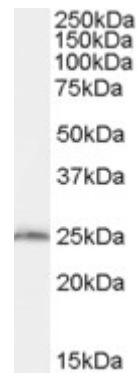
**Peptide ELISA:** antibody detection limit dilution 1:8000.

**Western blot:** Approx. 25kDa band observed in Mouse Liver and Rat Liver lysates (calculated MW of 22.4kDa according to human NP\_057187.1 and mouse NP\_079811.1). In transfected HEK293 transiently expressing SAR1B a band of approx. 26kDa is observed. This band is not observed in the non-transfected HEK293. Recommended concentration: 0.03-0.1µg/ml.

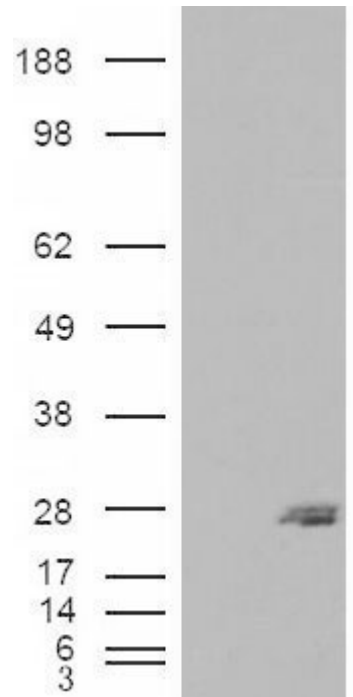
### Species Reactivity

**Tested:** Mouse, Rat

**Expected from sequence similarity:** Human, Mouse, Rat,



EB07902 (0.03µg/ml) staining of Mouse Liver lysate (35µg protein in RIPA buffer). Primary incubation was 1 hour. Detected by chemiluminescence.



HEK293 overexpressing SAR1B (RC210593) and probed with EB07902 (mock transfection in first lane), tested by Origene.