

UK Office

Everest Biotech Ltd

Cherwell Innovation Centre
77 Heyford Park
Upper Heyford
Oxfordshire
OX25 5HD
UK

Enquiries:

info@everestbiotech.com

Sales:

sales@everestbiotech.com

Tech support:

support@everestbiotech.com

Tel: +44 (0)1869 238326

www.everestbiotech.com

**Research Use Only. Not for
diagnostic or therapeutic use.**

EB06097 - Goat Anti-SAE1 / AOS1 Antibody

Size: 100µg specific antibody in 200µl



Target Protein

Principal Names: SAE1, AOS1, SUA1, HSPC140, SUMO-1 activating enzyme subunit 1, sentrin/SUMO-activating protein AOS1, SUMO-1 activating enzyme E1 N subunit, ubiquitin-like protein SUMO-1 activating enzyme, SUMO1 activating enzyme subunit 1, FLJ3091, UBLE1A, activator of SUMO1, ubiquitin-like 1-activating enzyme E1A

Official Symbol: SAE1

Accession Number(s): NP_005491.1

Human GeneID(s): [10055](#)

Immunogen

Peptide with sequence MKGNGIVECLGPK, from the C Terminus of the protein sequence according to NP_005491.1.

Please note the [peptide](#) is available for sale.

Purification and Storage

Purified from goat serum by ammonium sulphate precipitation followed by antigen affinity chromatography using the immunizing peptide.

Supplied at 0.5 mg/ml in Tris saline, 0.02% sodium azide, pH7.3 with 0.5% bovine serum albumin.

Aliquot and store at -20°C. Minimize freezing and thawing.

Applications Tested

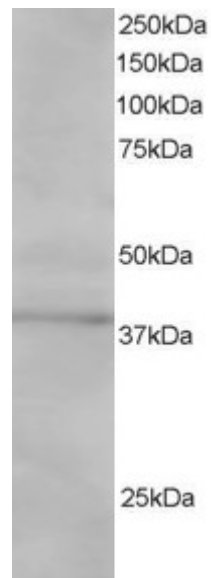
Peptide ELISA: antibody detection limit dilution 1:8000.

Western blot: Approx 40kDa band observed in Jurkat and 293 cell lysates (predicted MW of 40kDa according to NP_005491). Recommended for use at 1µg/ml.

Species Reactivity

Tested: Human

Expected from sequence similarity: Human, Dog, Cow



EB06097 staining (1 μ g/ml) of Jurkat lysate (RIPA buffer, 30 μ g total protein per lane). Primary incubated for 1 hour. Detected by western blot using chemiluminescence.