



UK Office

Everest Biotech Ltd

Cherwell Innovation Centre
77 Heyford Park
Upper Heyford
Oxfordshire
OX25 5HD
UK

Enquiries:

info@everestbiotech.com

Sales:

sales@everestbiotech.com

Tech support:

support@everestbiotech.com

Tel: +44 (0)1869 238326

www.everestbiotech.com

**Research Use Only. Not for
diagnostic or therapeutic use.**

EB06524 - Goat Anti-RXR beta Antibody

Size: 100µg specific antibody in 200µl



Target Protein

Principal Names: RXRB, NR2B2, DAUDI6, RCoR-1, MGC1831, H-2RIIBP, retinoid X receptor, beta, MHC class I promoter binding protein, DADB-100D22.1

Official Symbol: RXRB

Accession Number(s): NP_068811.1

Human GeneID(s): [6257](#)

Important Comments: This antibody is expected to recognise an epitope corresponding to aa 70-83 of human RXR beta protein and does not cross-react with either RXR alpha or gamma.

Immunogen

Peptide with sequence CRDGMGDSGRDSRSP, from the internal region of the protein sequence according to NP_068811.1.

Please note the [peptide](#) is available for sale.

Purification and Storage

Purified from goat serum by ammonium sulphate precipitation followed by antigen affinity chromatography using the immunizing peptide.

Supplied at 0.5 mg/ml in Tris saline, 0.02% sodium azide, pH7.3 with 0.5% bovine serum albumin.

Aliquot and store at -20°C. Minimize freezing and thawing.

Applications Tested

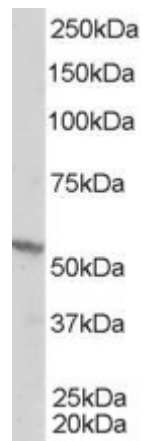
Peptide ELISA: antibody detection limit dilution 1:128000.

Western blot: Approx 55kDa band observed in lysates of cell line A431 (calculated MW of 56.9kDa according to NP_068811.1). In transfected HEK293 transiently expressing RXRB a band of approx. 60kDa is observed. This band is not observed in the non-transfected HEK293. Recommended concentration: 1-3µg/ml.

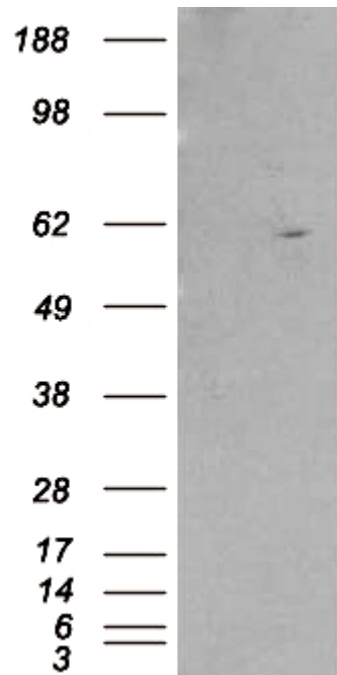
Species Reactivity

Tested: Human

Expected from sequence similarity: Human, Mouse, Rat, Dog, Pig, Cow



EB06524 staining (1µg/ml) of A431 lysate (RIPA buffer, 35µg total protein per lane). Primary incubated for 1 hour. Detected by western blot using chemiluminescence.



HEK293 overexpressing RXRB (RC200516) and probed with EB06524 (mock transfection in first lane), tested by Origene.