

## UK Office

### Everest Biotech Ltd

Cherwell Innovation Centre  
77 Heyford Park  
Upper Heyford  
Oxfordshire  
OX25 5HD  
UK

Enquiries:

[info@everestbiotech.com](mailto:info@everestbiotech.com)

Sales:

[sales@everestbiotech.com](mailto:sales@everestbiotech.com)

Tech support:

[support@everestbiotech.com](mailto:support@everestbiotech.com)

Tel: +44 (0)1869 238326

[www.everestbiotech.com](http://www.everestbiotech.com)

**Research Use Only. Not for  
diagnostic or therapeutic use.**

## EB05820 - Goat Anti-RNF39 / LIRF Antibody

Size: 100µg specific antibody in 200µl



### Target Protein

**Principal Names:** RNF39, LIRF, ring finger protein 39, HZFW1, HZFw1 protein, LTP (long-term potentiation) induced RING finger protein, DADB-60O11.8, HZF, HZFW

**Official Symbol:** RNF39

**Accession Number(s):** NP\_079512.1; NP\_739575.1

**Human GeneID(s):** [80352](#)

**Non-Human GeneID(s):** 171387 (rat)

**Important Comments:** This antibody is expected to recognize 2 of the 3 reported isoforms (NP\_079512.1 and NP\_739575.1 but not NP\_739576.1)

### Immunogen

Peptide with sequence CDPRAPLRIVPAES, from the C Terminus of the protein sequence according to NP\_079512.1; NP\_739575.1.

Please note the [peptide](#) is available for sale.

### Purification and Storage

Purified from goat serum by ammonium sulphate precipitation followed by antigen affinity chromatography using the immunizing peptide.

Supplied at 0.5 mg/ml in Tris saline, 0.02% sodium azide, pH7.3 with 0.5% bovine serum albumin.

Aliquot and store at -20°C. Minimize freezing and thawing.

### Applications Tested

**Peptide ELISA:** antibody detection limit dilution 1:16000.

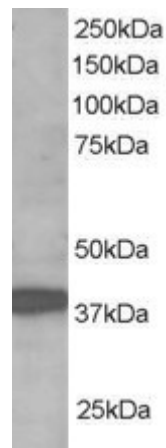
**Western blot:** Approx 40kDa band observed in Human Brain lysates (predicted MWs of 41kDa and 48kDa according to NP\_079512.1 and NP\_739575.1). Recommended for use at 1-3µg/ml.

**IHC:** Paraffin embedded Human Small Intestine. Recommended concentration: 10µg/ml.

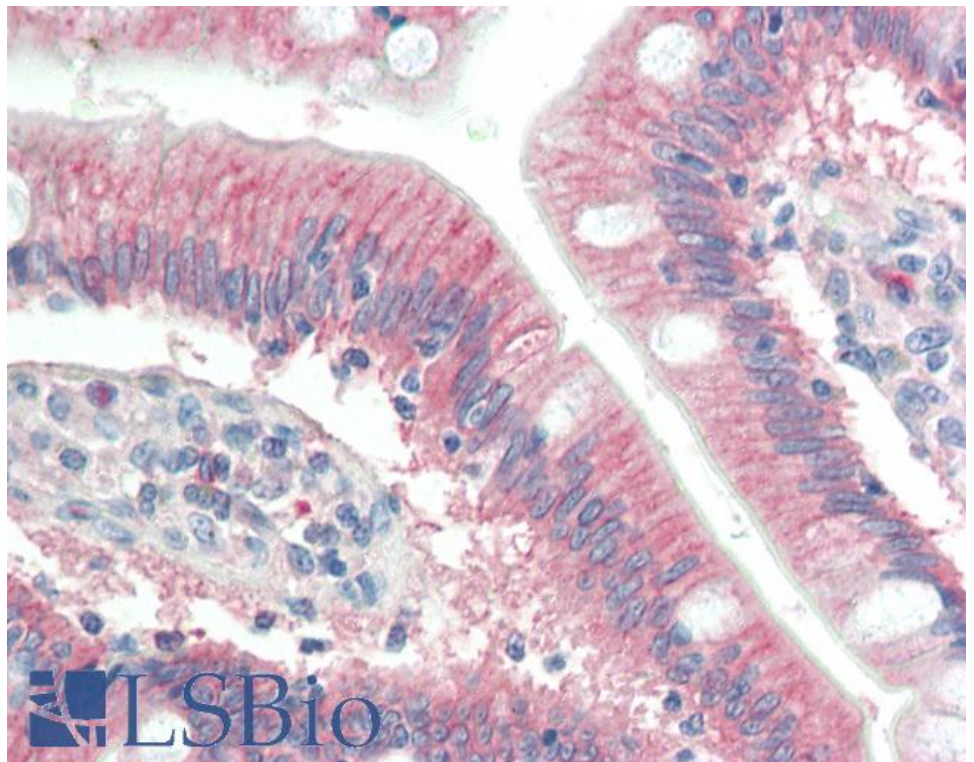
### Species Reactivity

**Tested:** Human

**Expected from sequence similarity:** Human, Rat, Pig



EB05820 staining (1 $\mu$ g/ml) of Human Brain lysate (RIPA buffer, 35 $\mu$ g total protein per lane). Primary incubated for 1 hour. Detected by chemiluminescence.



EB05820 (10 $\mu$ g/ml) staining of paraffin embedded Human Small Intestine. Steamed antigen retrieval with citrate buffer pH 6, AP-staining.