



## UK Office

### Everest Biotech Ltd

Cherwell Innovation Centre  
77 Heyford Park  
Upper Heyford  
Oxfordshire  
OX25 5HD  
UK

Enquiries:

[info@everestbiotech.com](mailto:info@everestbiotech.com)

Sales:

[sales@everestbiotech.com](mailto:sales@everestbiotech.com)

Tech support:

[support@everestbiotech.com](mailto:support@everestbiotech.com)

Tel: +44 (0)1869 238326

[www.everestbiotech.com](http://www.everestbiotech.com)

**Research Use Only. Not for  
diagnostic or therapeutic use.**

## EB06372 - Goat Anti-RGS18 Antibody

Size: 100µg specific antibody in 200µl



### Target Protein

**Principal Names:** RGS18, RGS13, regulator of G-protein signalling 18, regulator of G-protein signaling 13, RP11-142L4.1, regulator of G-protein signalling 13

**Official Symbol:** RGS18

**Accession Number(s):** NP\_570138.1

**Human GeneID(s):** [64407](#)

### Immunogen

Peptide with sequence CNEFQDVQSDVAIWL, from the C Terminus of the protein sequence according to NP\_570138.1.

Please note the [peptide](#) is available for sale.

### Purification and Storage

Purified from goat serum by ammonium sulphate precipitation followed by antigen affinity chromatography using the immunizing peptide.

Supplied at 0.5 mg/ml in Tris saline, 0.02% sodium azide, pH7.3 with 0.5% bovine serum albumin.

Aliquot and store at -20°C. Minimize freezing and thawing.

### Applications Tested

**Peptide ELISA:** antibody detection limit dilution 1:16000.

**Western blot:** Approx 28kDa band observed in Human Peripheral Blood

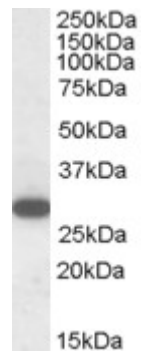
Mononucleocytes (lymphocytes) lysates (calculated MW of 27.6kDa according to NP\_570138.1). Recommended concentration: 1-3µg/ml. Primary incubation was 1 hour.

**IHC:** Paraffin embedded Human Prostate and Small Intestine. Recommended concentration: 5µg/ml.

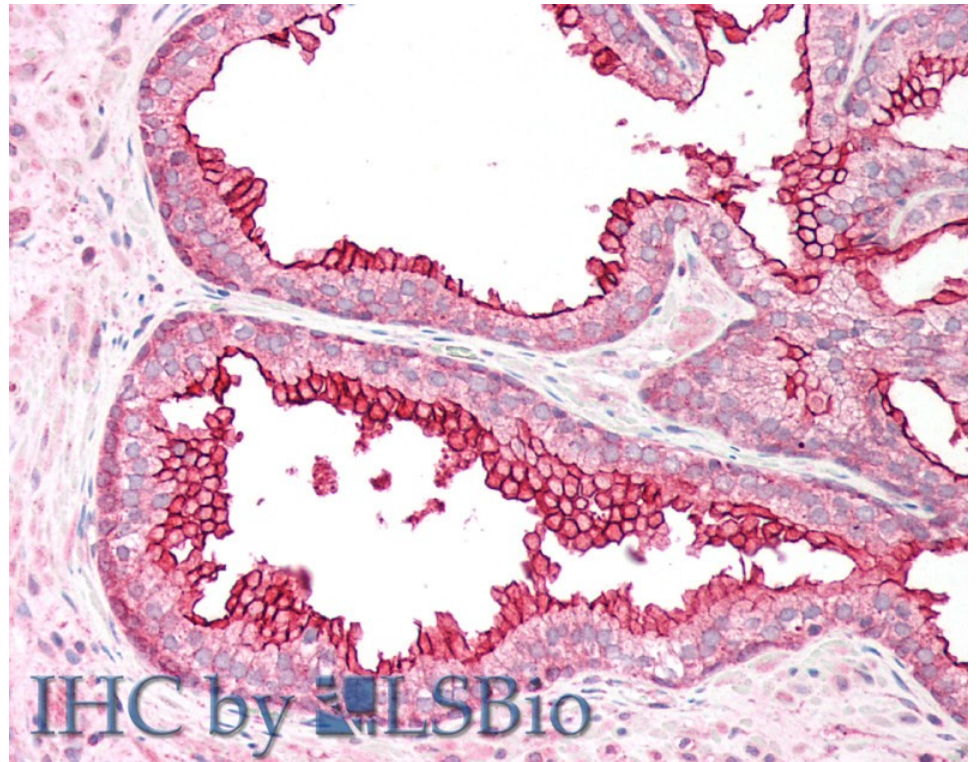
### Species Reactivity

**Tested:** Human

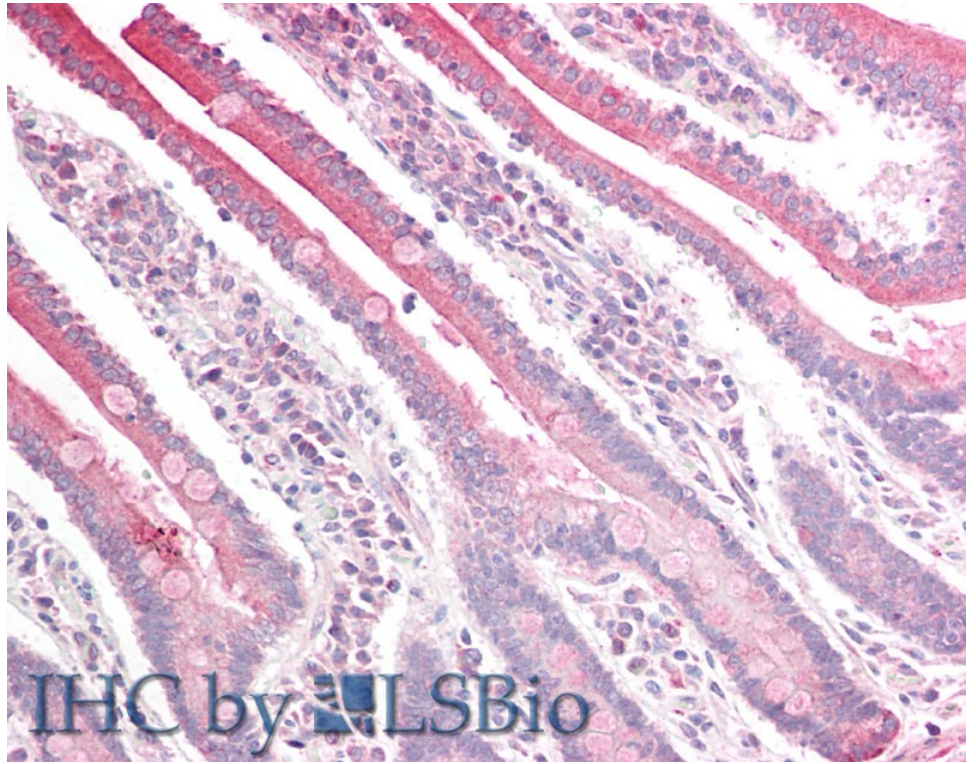
**Expected from sequence similarity:** Human



EB06372 (1µg/ml) staining of Human Peripheral Blood Mononucleocytes lysate (35µg protein in RIPA buffer).  
Detected by chemiluminescence.



EB06372 (5µg/ml) staining of paraffin embedded Human Prostate. Steamed antigen retrieval with citrate buffer pH 6, AP-staining.



EB06372 (5µg/ml) staining of paraffin embedded Human Small Intestine. Steamed antigen retrieval with citrate buffer pH 6, AP-staining.