

## UK Office

### Everest Biotech Ltd

Cherwell Innovation Centre  
77 Heyford Park  
Upper Heyford  
Oxfordshire  
OX25 5HD  
UK

Enquiries:

[info@everestbiotech.com](mailto:info@everestbiotech.com)

Sales:

[sales@everestbiotech.com](mailto:sales@everestbiotech.com)

Tech support:

[support@everestbiotech.com](mailto:support@everestbiotech.com)

Tel: +44 (0)1869 238326

[www.everestbiotech.com](http://www.everestbiotech.com)

**Research Use Only. Not for  
diagnostic or therapeutic use.**

## EB08633 - Goat Anti-RELMbeta Antibody

Size: 100µg specific antibody in 200µl



### Target Protein

**Principal Names:** RETNLB, resistin like beta, FIZZ1, FIZZ2, HXCP2, RELM-beta, RELMb, RELMbeta, XCP2, C/EBP-epsilon regulated myeloid-specific secreted cysteine-rich protein precursor 2, colon and small intestine-specific cysteine-rich protein, cysteine-rich secreted A12-alpha-like protein 1, found in inflammatory zone 1

**Official Symbol:** RETNLB

**Accession Number(s):** NP\_115968.1

**Human GeneID(s):** [84666](#)

### Immunogen

Peptide with sequence C-DSVMDKKIKDVLNS, from the internal region of the protein sequence according to NP\_115968.1.

Please note the [peptide](#) is available for sale.

### Purification and Storage

Purified from goat serum by ammonium sulphate precipitation followed by antigen affinity chromatography using the immunizing peptide.

Supplied at 0.5 mg/ml in Tris saline, 0.02% sodium azide, pH7.3 with 0.5% bovine serum albumin.

Aliquot and store at -20°C. Minimize freezing and thawing.

### Applications Tested

**Peptide ELISA:** antibody detection limit dilution 1:128000.

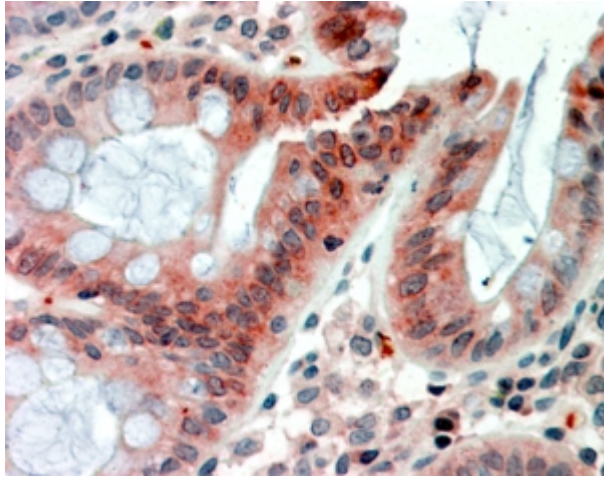
**Western blot:** Preliminary experiments gave an approx 35kDa band in Human Ileum and Duodenum lysates after 0.1µg/ml antibody staining. Please note that currently we cannot find an explanation in the literature for the band we observe given the calculated size of 11.7kDa according to NP\_115968.1. The 35kDa band was successfully blocked by incubation with the immunizing peptide. We would appreciate any feedback from people in the field - have any results been reported with other antibodies/lysates? Have any further splice variants/modified forms been reported?

**IHC:** In paraffin embedded Human Colon shows textured staining of cytoplasm in enterocytes. Recommended concentration, 2-4µg/ml.

### Species Reactivity

**Tested:** Human

**Expected from sequence similarity:** Human



EB08633 (2.5g/ml) staining of paraffin embedded Human Colon. Steamed antigen retrieval with citrate buffer pH 6, AP-staining.