



UK Office

Everest Biotech Ltd

Cherwell Innovation Centre
77 Heyford Park
Upper Heyford
Oxfordshire
OX25 5HD
UK

Enquiries:

info@everestbiotech.com

Sales:

sales@everestbiotech.com

Tech support:

support@everestbiotech.com

Tel: +44 (0)1869 238326

www.everestbiotech.com

**Research Use Only. Not for
diagnostic or therapeutic use.**

EB07761 - Goat Anti-PSME1 (isoform 1) Antibody

Size: 100µg specific antibody in 200µl



Target Protein

Principal Names: PSME1, proteasome (prosome, macropain) activator subunit 1 (PA28 alpha), IFI5111, MGC8628, PA28A, PA28alpha, REGalpha, 11S regulator complex alpha subunit, 29-kD MCP activator subunit, activator of multicatalytic protease subunit 1, interferon gamma up-regulated I-5111 protein, interferon-gamma IEF SSP 5111, interferon-gamma-inducible protein 5111, proteasome activator subunit 1, proteasome activator subunit-1

Official Symbol: PSME1

Accession Number(s): NP_006254.1

Human GeneID(s): [5720](#)

Non-Human GeneID(s): 19186 (mouse), 29630 (rat)

Important Comments: This antibody is expected to recognise isoform 1 (NP_006254.1).

Immunogen

Peptide with sequence C-KNFEKLKKPRGETK, from the C Terminus of the protein sequence according to NP_006254.1.

Please note the [peptide](#) is available for sale.

Purification and Storage

Purified from goat serum by ammonium sulphate precipitation followed by antigen affinity chromatography using the immunizing peptide.

Supplied at 0.5 mg/ml in Tris saline, 0.02% sodium azide, pH7.3 with 0.5% bovine serum albumin.

Aliquot and store at -20°C. Minimize freezing and thawing.

Applications Tested

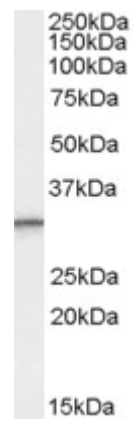
Peptide ELISA: antibody detection limit dilution 1:64000.

Western blot: Approx 30kDa band observed in Human Lymph Node, Spleen, Tonsil and Peripheral Blood Mononuclear cell lysates (calculated MW of 28.7kDa according to NP_006254.1). Recommended concentration: 0.3-1µg/ml.

Species Reactivity

Tested: Human

Expected from sequence similarity: Human, Mouse, Rat, Dog



EB07761 (0.3 μ g/ml) staining of Human Peripheral Blood Mononucleocyte lysate (35 μ g protein in RIPA buffer).
Primary incubation was 1 hour. Detected by chemiluminescence.