



UK Office

Everest Biotech Ltd

Cherwell Innovation Centre
77 Heyford Park
Upper Heyford
Oxfordshire
OX25 5HD
UK

Enquiries:

info@everestbiotech.com

Sales:

sales@everestbiotech.com

Tech support:

support@everestbiotech.com

Tel: +44 (0)1869 238326

www.everestbiotech.com

**Research Use Only. Not for
diagnostic or therapeutic use.**

EB12016 - Goat Anti-polo-like kinase 5 (aa309-322) Antibody

Size: 100µg specific antibody in 200µl



Target Protein

Principal Names: PLK5, polo-like kinase 5, PLK-5, PLK5P, SgK384ps, inactive serine/threonine-protein kinase PLK5, polo-like kinase 5, pseudogene

Official Symbol: PLK5

Accession Number(s): NP_001230008.1

Human GeneID(s): [126520](#)

Immunogen

Peptide with sequence SLDVPRSHGCAPTT, from the internal region of the protein sequence according to NP_001230008.1.

Please note the [peptide](#) is available for sale.

Purification and Storage

Purified from goat serum by ammonium sulphate precipitation followed by antigen affinity chromatography using the immunizing peptide.

Supplied at 0.5 mg/ml in Tris saline, 0.02% sodium azide, pH7.3 with 0.5% bovine serum albumin.

Aliquot and store at -20°C. Minimize freezing and thawing.

Applications Tested

Peptide ELISA: antibody detection limit dilution 1:64000.

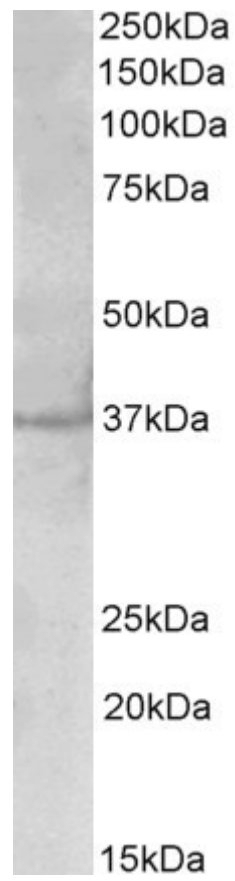
Western blot: Approx 37kDa band observed in Human Brain (Cerebellum and Cerebral Cortex) lysates (calculated MW of 36.3kDa according to NP_001230008.1).

Recommended concentration: 1-3µg/ml.

Species Reactivity

Tested: Human

Expected from sequence similarity: Human



EB12016 (2 μ g/ml) staining of Cerebral Cortex ysate (35 μ g protein in RIPA buffer). Primary incubation was 1 hour. Detected by chemiluminescence.