



UK Office

Everest Biotech Ltd

Cherwell Innovation Centre
77 Heyford Park
Upper Heyford
Oxfordshire
OX25 5HD
UK

Enquiries:

info@everestbiotech.com

Sales:

sales@everestbiotech.com

Tech support:

support@everestbiotech.com

Tel: +44 (0)1869 238326

www.everestbiotech.com

**Research Use Only. Not for
diagnostic or therapeutic use.**

EB11524 - Goat Anti-PLK1 (aa287-298) Antibody

Size: 100µg specific antibody in 200µl



Target Protein

Principal Names: cell cycle regulated protein kinase, OTTHUMP00000122462, PLK, PLK1, PLK-1, polo (Drosophila)-like kinase, polo like kinase, polo-like kinase 1, serine/threonine-protein kinase 13, serine/threonine-protein kinase PLK1, STPK13

Official Symbol: PLK1

Accession Number(s): NP_005021.2

Human GeneID(s): [5347](#)

Immunogen

Peptide with sequence C-QTDPTARPTINE, from the internal region of the protein sequence according to NP_005021.2.

Please note the [peptide](#) is available for sale.

Purification and Storage

Purified from goat serum by ammonium sulphate precipitation followed by antigen affinity chromatography using the immunizing peptide.

Supplied at 0.5 mg/ml in Tris saline, 0.02% sodium azide, pH7.3 with 0.5% bovine serum albumin.

Aliquot and store at -20°C. Minimize freezing and thawing.

Applications Tested

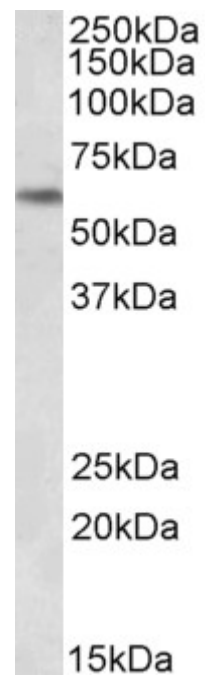
Peptide ELISA: antibody detection limit dilution 1:16000.

Western blot: Approx 60kDa band observed in nuclear lysates of cell line HeLa (calculated MW of 68.3kDa according to NP_005021.2). Recommended concentration: 0.3-1µg/ml.

Species Reactivity

Tested: Human

Expected from sequence similarity: Human, Mouse, Rat, Dog, Pig, Cow



EB11524 (0.3 μ g/ml) staining of HeLa nuclear lysate (35 μ g protein in RIPA buffer). Primary incubation was 1 hour. Detected by chemiluminescence.