



## UK Office

### Everest Biotech Ltd

Cherwell Innovation Centre  
77 Heyford Park  
Upper Heyford  
Oxfordshire  
OX25 5HD  
UK

Enquiries:

[info@everestbiotech.com](mailto:info@everestbiotech.com)

Sales:

[sales@everestbiotech.com](mailto:sales@everestbiotech.com)

Tech support:

[support@everestbiotech.com](mailto:support@everestbiotech.com)

Tel: +44 (0)1869 238326

[www.everestbiotech.com](http://www.everestbiotech.com)

**Research Use Only. Not for  
diagnostic or therapeutic use.**

## EB09726 - Goat Anti-PINX1 (aa225-237) Antibody

Size: 100µg specific antibody in 200µl



### Target Protein

**Principal Names:** PINX1, FLJ20565, LPTL, LPTS, MGC8850, 67-11-3 protein, hepatocellular carcinoma-related putative tumor suppressor, PIN2-interacting protein 1, Pin2-interacting protein X1

**Official Symbol:** PINX1

**Accession Number(s):** NP\_060354.4

**Human GeneID(s):** [54984](#)

### Immunogen

Peptide with sequence C-ESYLQPKAKRHTE, from the internal region of the protein sequence according to NP\_060354.4.

Please note the [peptide](#) is available for sale.

### Purification and Storage

Purified from goat serum by ammonium sulphate precipitation followed by antigen affinity chromatography using the immunizing peptide.

Supplied at 0.5 mg/ml in Tris saline, 0.02% sodium azide, pH7.3 with 0.5% bovine serum albumin.

Aliquot and store at -20°C. Minimize freezing and thawing.

### Applications Tested

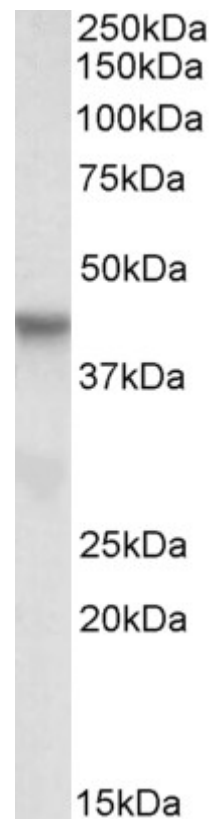
**Peptide ELISA:** antibody detection limit dilution 1:16000.

**Western blot:** Approx 40kDa band observed in lysates of cell lines A549, HepG2 and K562 (calculated MW of 37.0kDa according to NP\_060354.4). Recommended concentration: 0.3-1µg/ml.

### Species Reactivity

**Tested:** Human

**Expected from sequence similarity:** Human



EB09726 (0.3 $\mu$ g/ml) staining of HepG2 lysate (35 $\mu$ g protein in RIPA buffer). Primary incubation was 1 hour.  
Detected by chemiluminescence.