



## UK Office

### Everest Biotech Ltd

Cherwell Innovation Centre  
77 Heyford Park  
Upper Heyford  
Oxfordshire  
OX25 5HD  
UK

Enquiries:

[info@everestbiotech.com](mailto:info@everestbiotech.com)

Sales:

[sales@everestbiotech.com](mailto:sales@everestbiotech.com)

Tech support:

[support@everestbiotech.com](mailto:support@everestbiotech.com)

Tel: +44 (0)1869 238326

[www.everestbiotech.com](http://www.everestbiotech.com)

**Research Use Only. Not for  
diagnostic or therapeutic use.**

## EB09008 - Goat Anti-PHR1 Antibody

Size: 100µg specific antibody in 200µl



### Target Protein

**Principal Names:** PLEKHB1, pleckstrin homology domain containing, family B (evectins) member 1, KPL1, PHR1, PHRET1, PH domain containing protein in retina 1, PH domain containing, retinal 1, evectin-1

**Official Symbol:** PLEKHB1

**Accession Number(s):** NP\_067023.1; NP\_001123506.1; NP\_001123505.1;  
NP\_001123507.1; NP\_001123508.1;

**Human GenelD(s):** [58473](#)

**Non-Human GenelD(s):** 27276 (mouse), 64471 (rat)

**Important Comments:** This antibody is expected to recognize reported isoforms a (NP\_067023.1) and c (NP\_001123505.1).

### Immunogen

Peptide with sequence PPDSALESPFEE-C, from the N Terminus of the protein sequence according to NP\_067023.1; NP\_001123506.1; NP\_001123505.1; NP\_001123507.1; NP\_001123508.1;.

Please note the [peptide](#) is available for sale.

### Purification and Storage

Purified from goat serum by ammonium sulphate precipitation followed by antigen affinity chromatography using the immunizing peptide.

Supplied at 0.5 mg/ml in Tris saline, 0.02% sodium azide, pH7.3 with 0.5% bovine serum albumin.

Aliquot and store at -20°C. Minimize freezing and thawing.

### Applications Tested

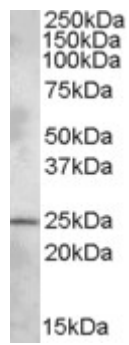
**Peptide ELISA:** antibody detection limit dilution 1:16000.

**Western blot:** Approx. 25kDa band observed in Rat Brain lysates (calculated MW of 25.2kDa according to Rat NP\_742030.1 (Evectin-1) and of 27.2kDa according to Human NP\_067023.1). Recommended concentration: 1-3µg/ml.

### Species Reactivity

**Tested:** Rat

**Expected from sequence similarity:** Human, Mouse, Rat, Cow



EB09008 (1 $\mu$ g/ml) staining of Rat Brain lysate (35 $\mu$ g protein in RIPA buffer). Primary incubation was 1 hour.  
Detected by chemiluminescence.