



UK Office

Everest Biotech Ltd

Cherwell Innovation Centre
77 Heyford Park
Upper Heyford
Oxfordshire
OX25 5HD
UK

Enquiries:

info@everestbiotech.com

Sales:

sales@everestbiotech.com

Tech support:

support@everestbiotech.com

Tel: +44 (0)1869 238326

www.everestbiotech.com

**Research Use Only. Not for
diagnostic or therapeutic use.**

EB05269 - Goat Anti-PACSIN1 Antibody

Size: 100µg specific antibody in 200µl



Target Protein

Principal Names: PACSIN1, protein kinase C and casein kinase substrate in neurons 1, KIAA1379, SDPI, syndapin I

Official Symbol: PACSIN1

Accession Number(s): NP_065855.1

Human GeneID(s): [29993](#)

Important Comments: Reported variants represent identical protein (NP_065855.1; NP_001186512.1).

Immunogen

Peptide with sequence SSSYDEASLAPEET-C, from the N Terminus of the protein sequence according to NP_065855.1.

Please note the [peptide](#) is available for sale.

Purification and Storage

Purified from goat serum by ammonium sulphate precipitation followed by antigen affinity chromatography using the immunizing peptide.

Supplied at 0.5 mg/ml in Tris saline, 0.02% sodium azide, pH7.3 with 0.5% bovine serum albumin.

Aliquot and store at -20°C. Minimize freezing and thawing.

Applications Tested

Peptide ELISA: antibody detection limit dilution 1:32000.

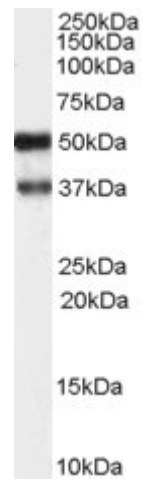
Western blot: Approx 50kDa band observed in Human Brain (Hippocampus) lysates (calculated MW of 51.1kDa according to NP_065855.1). Recommended concentration: 0.03-0.1µg/ml. An additional band of unknown identity was also consistently observed at 37kDa. This band was successfully blocked by incubation with the immunising peptide.

IHC: Paraffin embedded Human Brain (Cortex and Cerebellum). Recommended concentration: 2.5µg/ml.

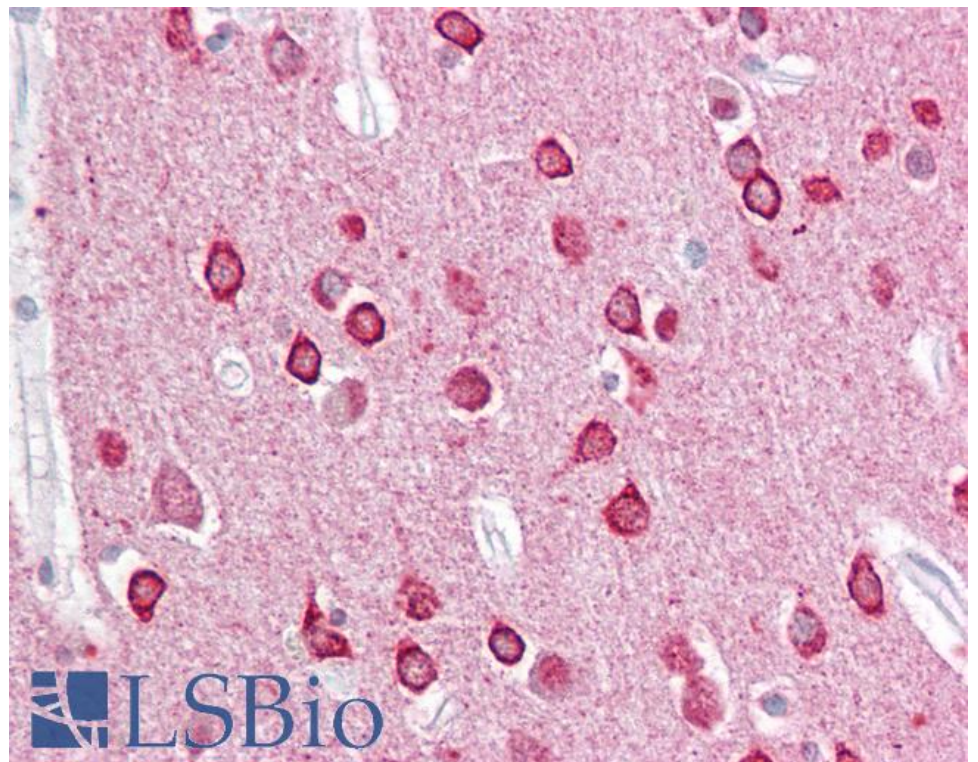
Species Reactivity

Tested: Human

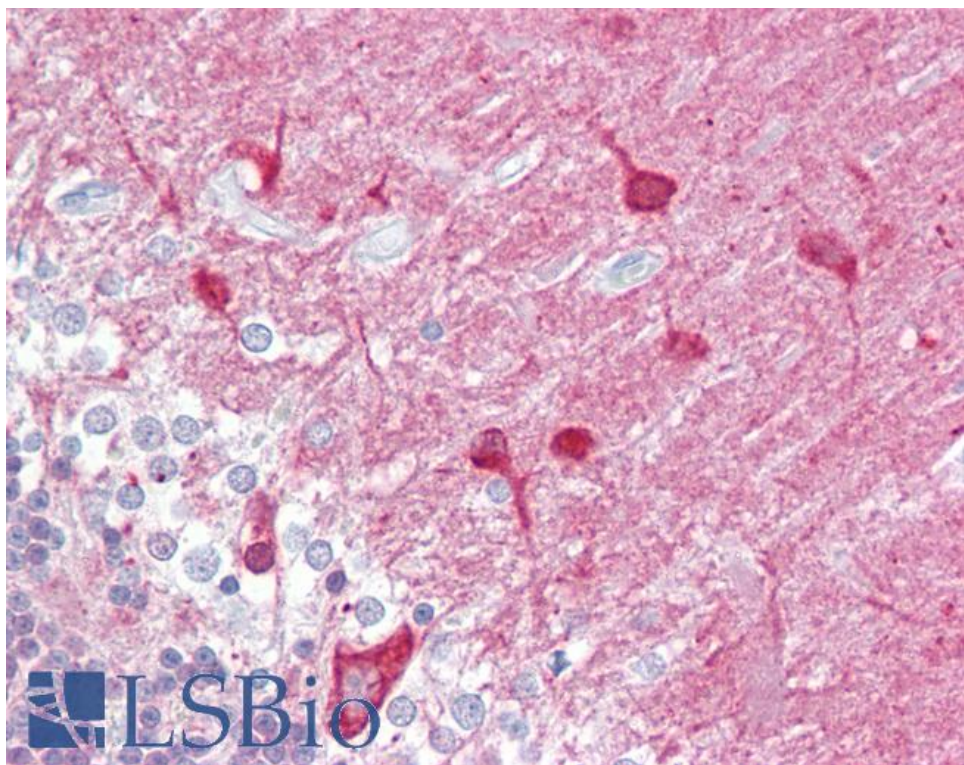
Expected from sequence similarity: Human, Dog, Pig, Cow



EB05269 (1 μ g/ml) staining of Hippocampus) lysate (35 μ g protein in RIPA buffer). Primary incubation was 1 hour.
Detected by chemiluminescence.



EB05269 (2.5 μ g/ml) staining of paraffin embedded Human Cortex. Steamed antigen retrieval with citrate buffer pH 6, AP-staining.



EB05269 (2.5µg/ml) staining of paraffin embedded Human Cerebellum. Steamed antigen retrieval with citrate buffer pH 6, AP-staining.