



## UK Office

### Everest Biotech Ltd

Cherwell Innovation Centre  
77 Heyford Park  
Upper Heyford  
Oxfordshire  
OX25 5HD  
UK

Enquiries:

[info@everestbiotech.com](mailto:info@everestbiotech.com)

Sales:

[sales@everestbiotech.com](mailto:sales@everestbiotech.com)

Tech support:

[support@everestbiotech.com](mailto:support@everestbiotech.com)

Tel: +44 (0)1869 238326

[www.everestbiotech.com](http://www.everestbiotech.com)

**Research Use Only. Not for  
diagnostic or therapeutic use.**

## EB07390 - Goat Anti-NTRK2 Antibody

Size: 100µg specific antibody in 200µl



### Target Protein

**Principal Names:** NTRK2, neurotrophic tyrosine kinase, receptor, type 2, GP145-TrkB, TRKB, BDNF/NT-3 growth factors receptor, tyrosine kinase receptor B, BDNF receptor

**Official Symbol:** NTRK2

**Accession Number(s):** NP\_006171.2; NP\_001007098.1; NP\_001018074.1;  
NP\_001018075.1; NP\_001018076.1

**Human GeneID(s):** [4915](#)

**Important Comments:** This antibody is expected to recognise isoforms a (NP\_006171.2), b ((NP\_001007098.1), c (NP\_001018074.1), d (NP\_001018075.1), e (NP\_001018076.1).

### Immunogen

Peptide with sequence C-KTLQEAQSSPDTQ, from the internal region of the protein sequence according to NP\_006171.2; NP\_001007098.1; NP\_001018074.1; NP\_001018075.1; NP\_001018076.1.

Please note the [peptide](#) is available for sale.

### Purification and Storage

Purified from goat serum by ammonium sulphate precipitation followed by antigen affinity chromatography using the immunizing peptide.

Supplied at 0.5 mg/ml in Tris saline, 0.02% sodium azide, pH7.3 with 0.5% bovine serum albumin.

Aliquot and store at -20°C. Minimize freezing and thawing.

### Applications Tested

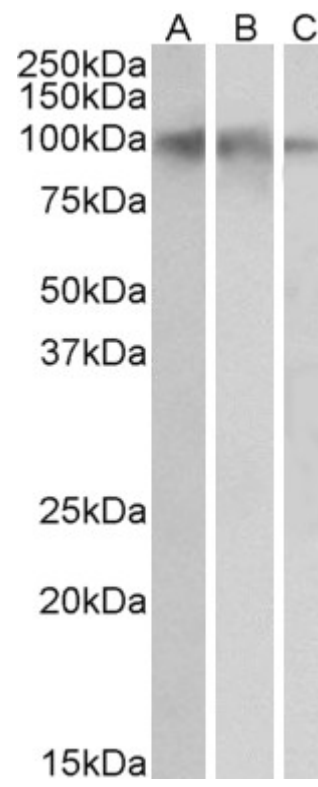
**Peptide ELISA:** antibody detection limit dilution 1:64000.

**Western blot:** Approx 100kDa band observed in Human Brain (Hippocampus, Cerebral Cortex and Cerebellum) lysates (calculated MW of 93.8kDa according to NP\_006171.2). Recommended concentration: 0.05-0.2µg/ml.

### Species Reactivity

**Tested:** Human

**Expected from sequence similarity:** Human, Mouse, Rat, Dog



EB07390 (0.05 $\mu$ g/ml) staining of Human Hippocampus (A), Cerebral Cortex (B) and Cerebellum (C) lysates (35 $\mu$ g protein in RIPA buffer). Primary incubation was 1 hour. Detected by chemiluminescence.