



UK Office

Everest Biotech Ltd

Cherwell Innovation Centre
77 Heyford Park
Upper Heyford
Oxfordshire
OX25 5HD
UK

Enquiries:

info@everestbiotech.com

Sales:

sales@everestbiotech.com

Tech support:

support@everestbiotech.com

Tel: +44 (0)1869 238326

www.everestbiotech.com

**Research Use Only. Not for
diagnostic or therapeutic use.**

EB08373 - Goat Anti-NPFFR1 Antibody

Size: 100µg specific antibody in 200µl



Target Protein

Principal Names: NPFFR1, neuropeptide FF receptor 1, FLJ10751, GPR147, NPFF1, NPFF1R1, OT7T022, G protein-coupled receptor 147, neuropeptide FF 1

Official Symbol: NPFFR1

Accession Number(s): NP_071429.1

Human GeneID(s): [64106](#)

Immunogen

Peptide with sequence C-RPSGSHKEAYSERP, from the internal region of the protein sequence according to NP_071429.1.

Please note the [peptide](#) is available for sale.

Purification and Storage

Purified from goat serum by ammonium sulphate precipitation followed by antigen affinity chromatography using the immunizing peptide.

Supplied at 0.5 mg/ml in Tris saline, 0.02% sodium azide, pH7.3 with 0.5% bovine serum albumin.

Aliquot and store at -20°C. Minimize freezing and thawing.

Applications Tested

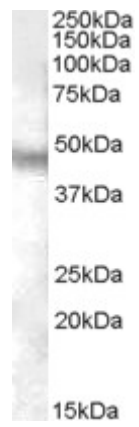
Peptide ELISA: antibody detection limit dilution 1:64000.

Western blot: Approx 48kDa band observed in Human Brain (Cerebellum and Cerebral Cortex) lysates (calculated MW of 47.8kDa according to NP_071429.1). Recommended concentration: 0.03-0.1µg/ml.

Species Reactivity

Tested: Human

Expected from sequence similarity: Human



EB08373 (0.03 μ g/ml) staining of Human Brain (Cerebellum) lysate (35 μ g protein in RIPA buffer). Primary incubation was 1 hour. Detected by chemiluminescence.