



## UK Office

### Everest Biotech Ltd

Cherwell Innovation Centre  
77 Heyford Park  
Upper Heyford  
Oxfordshire  
OX25 5HD  
UK

Enquiries:

[info@everestbiotech.com](mailto:info@everestbiotech.com)

Sales:

[sales@everestbiotech.com](mailto:sales@everestbiotech.com)

Tech support:

[support@everestbiotech.com](mailto:support@everestbiotech.com)

Tel: +44 (0)1869 238326

[www.everestbiotech.com](http://www.everestbiotech.com)

**Research Use Only. Not for  
diagnostic or therapeutic use.**

## EB06970 - Goat Anti-NHERF2 (isoform b, e) Antibody

Size: 100µg specific antibody in 200µl



### Target Protein

**Principal Names:** SLC9A3R2, solute carrier family 9 (sodium/hydrogen exchanger), isoform 3 regulator 2, HGNC:11076, E3KARP, NHE3RF2, NHERF-2, NHERF2, OCTS2, SIP-1, SIP1, TKA-1, sodium/hydrogen exchanger, solute carrier family 9 (sodium/hydrogen exchanger), isoform 3 regulatory factor 2, solute carrier family 9 isoform 3 regulator 2, solute carrier family 9 (sodium/hydrogen exchanger), member 3 regulator 2, MGC104639, solute carrier family 9 (sodium/hydrogen exchanger), isoform 3 regulatory factor 2

**Official Symbol:** SLC9A3R2

**Accession Number(s):** NP\_004776.3; NP\_001239005.1

**Human GeneID(s):** [9351](#)

**Important Comments:** This antibody is expected to recognize isoforms b and e (NP\_004776.3 and NP\_001239005.1) only.

### Immunogen

Peptide with sequence C-DLPGSDKDTEESGLH, from the internal region of the protein sequence according to NP\_004776.3; NP\_001239005.1.

Please note the [peptide](#) is available for sale.

### Purification and Storage

Purified from goat serum by ammonium sulphate precipitation followed by antigen affinity chromatography using the immunizing peptide.

Supplied at 0.5 mg/ml in Tris saline, 0.02% sodium azide, pH7.3 with 0.5% bovine serum albumin.

Aliquot and store at -20°C. Minimize freezing and thawing.

### Applications Tested

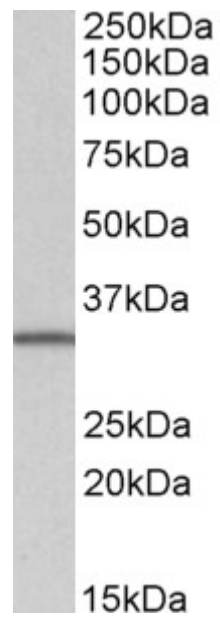
**Peptide ELISA:** antibody detection limit dilution 1:32000.

**Western blot:** Approx 35kDa band observed in lysates of cell lines HEK293 and Daudi (calculated MW of 36.2kDa according to NP\_004776.3). Recommended concentration: 1-3µg/ml.

### Species Reactivity

**Tested:** Human

**Expected from sequence similarity:** Human



EB06970 (1µg/ml) staining of Daudi lysate (35µg protein in RIPA buffer). Primary incubation was 1 hour.  
Detected by chemiluminescence.