

UK Office

Everest Biotech Ltd

Cherwell Innovation Centre
77 Heyford Park
Upper Heyford
Oxfordshire
OX25 5HD
UK

Enquiries:

info@everestbiotech.com

Sales:

sales@everestbiotech.com

Tech support:

support@everestbiotech.com

Tel: +44 (0)1869 238326

www.everestbiotech.com

**Research Use Only. Not for
diagnostic or therapeutic use.**

EB07600 - Goat Anti-Neurochondrin Antibody

Size: 100µg specific antibody in 200µl



Target Protein

Principal Names: NCDN, neurochondrin, KIAA0607

Official Symbol: NCDN

Accession Number(s): NP_055099.1; NP_001014841.1

Human GeneID(s): [23154](#)

Non-Human GeneID(s): 26562 (mouse), 89791 (rat)

Important Comments: This antibody is expected to recognize both reported isoforms (NP_055099.1; NP_001014841.1). Reported variants represent identical protein (NP_055099.1; NP_001014839.1).

Immunogen

Peptide with sequence C-HYLLQVGSEKQKEP, from the internal region of the protein sequence according to NP_055099.1; NP_001014841.1.

Please note the [peptide](#) is available for sale.

Purification and Storage

Purified from goat serum by ammonium sulphate precipitation followed by antigen affinity chromatography using the immunizing peptide.

Supplied at 0.5 mg/ml in Tris saline, 0.02% sodium azide, pH7.3 with 0.5% bovine serum albumin.

Aliquot and store at -20°C. Minimize freezing and thawing.

Applications Tested

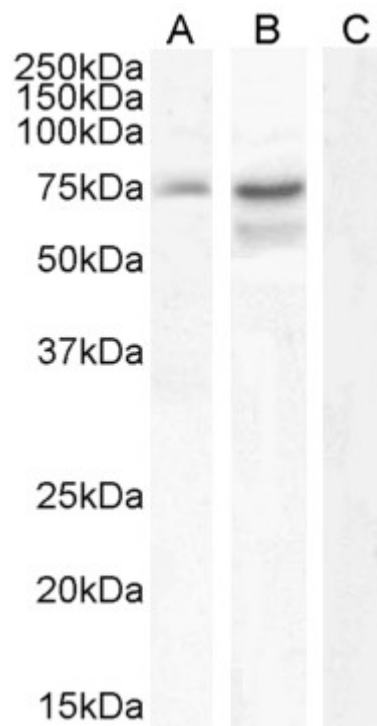
Peptide ELISA: antibody detection limit dilution 1:16000.

Western blot: Approx 75kDa band observed in lysates of cell lines HepG2 and U251 (calculated MW of 77.2kDa according to NP_001014841.1). An additional band of unknown identity was also observed in U251 lysates at 55kDa. This band was successfully blocked by incubation with the immunizing peptide. Recommended concentration: 0.3-1µg/ml. Primary incubation 1 hour at room temperature. Preliminary testing was unsuccessful on Rat and Mouse Kidney and Brain and NIH3T3 cell line for this particular batch.

Species Reactivity

Tested: Human

Expected from sequence similarity: Human, Mouse, Rat, Dog, Cow



EB07600 (0.3 μ g/ml) staining of HepG2 (A) and (1 μ g/ml) U251 cell lysate (B) + peptide (C) (35 μ g protein in RIPA buffer). Detected by chemiluminescence.