

## UK Office

### Everest Biotech Ltd

Cherwell Innovation Centre  
77 Heyford Park  
Upper Heyford  
Oxfordshire  
OX25 5HD  
UK

Enquiries:

[info@everestbiotech.com](mailto:info@everestbiotech.com)

Sales:

[sales@everestbiotech.com](mailto:sales@everestbiotech.com)

Tech support:

[support@everestbiotech.com](mailto:support@everestbiotech.com)

Tel: +44 (0)1869 238326

[www.everestbiotech.com](http://www.everestbiotech.com)

**Research Use Only. Not for  
diagnostic or therapeutic use.**

## EB09175 - Goat Anti-NDEL1 Antibody

Size: 100µg specific antibody in 200µl



### Target Protein

**Principal Names:** NDEL1, nudE nuclear distribution gene E homolog (A. nidulans)-like 1, DKFZp451M0318, EOPA, MITAP1, NUDEL, NUDE-like protein, endooligopeptidase A, mitosis-associated protein MITAP1, nudE nuclear distribution gene E homolog like 1

**Official Symbol:** NDEL1

**Accession Number(s):** NP\_001020750.1; NP\_110435.1

**Human GeneID(s):** [81565](#)

**Non-Human GeneID(s):** 83431 (mouse), 170845 (rat)

**Important Comments:** This antibody is expected to recognize both reported isoforms (NP\_001020750.1; NP\_110435.1).

### Immunogen

Peptide with sequence CRNFAKDQASRKSY, from the internal region of the protein sequence according to NP\_001020750.1; NP\_110435.1.

Please note the [peptide](#) is available for sale.

### Purification and Storage

Purified from goat serum by ammonium sulphate precipitation followed by antigen affinity chromatography using the immunizing peptide.

Supplied at 0.5 mg/ml in Tris saline, 0.02% sodium azide, pH7.3 with 0.5% bovine serum albumin.

Aliquot and store at -20°C. Minimize freezing and thawing.

### Applications Tested

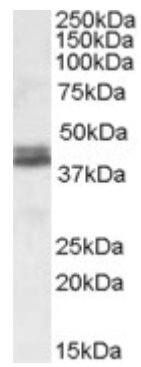
**Peptide ELISA:** antibody detection limit dilution 1:8000.

**Western blot:** Approx 38+39kDa bands observed in Human Brain (Cerebellum) lysates (calculated MW of 37.0kDa according to NP\_001020750.1 and of 38.4kDa according to NP\_110435.1). Recommended concentration: 0.1-0.3µg/ml.

### Species Reactivity

**Tested:** Human

**Expected from sequence similarity:** Human, Mouse, Rat, Dog, Pig, Cow



EB09175 (0.1µg/ml) staining of Human Cerebellum lysate (35µg protein in RIPA buffer). Primary incubation was 1 hour. Detected by chemiluminescence.