

UK Office

Everest Biotech Ltd

Cherwell Innovation Centre
77 Heyford Park
Upper Heyford
Oxfordshire
OX25 5HD
UK

Enquiries:

info@everestbiotech.com

Sales:

sales@everestbiotech.com

Tech support:

support@everestbiotech.com

Tel: +44 (0)1869 238326

www.everestbiotech.com

**Research Use Only. Not for
diagnostic or therapeutic use.**

EB12304 - Goat Anti-NAT1 (aa272-286) Antibody

Size: 100µg specific antibody in 200µl



Target Protein

Principal Names: NAT1, N-acetyltransferase 1 (arylamine N-acetyltransferase), AAC1, MNAT, NAT-1, NATI, N-acetyltransferase type 1, arylamide acetylase 1, arylamine N-acetyltransferase 1, monomorphic arylamine N-acetyltransferase

Official Symbol: NAT1

Accession Number(s): NP_000653.3; NP_001153647.1

Human GeneID(s): [9](#)

Important Comments: This antibody is expected to recognize both reported isoforms (NP_000653.3; NP_001153647.1). Reported variants represent identical protein: NP_001153646.1, NP_001153642.1, NP_001153645.1, NP_001153644.1, NP_001153651.1, NP_001153643.1, NP_000653.3. Reported variants represent identical protein: NP_001153647.1, NP_001153648.1.

Immunogen

Peptide with sequence C-NISLQRKLVPHGDR, from the C Terminus of the protein sequence according to NP_000653.3; NP_001153647.1.

Please note the [peptide](#) is available for sale.

Purification and Storage

Purified from goat serum by ammonium sulphate precipitation followed by antigen affinity chromatography using the immunizing peptide.

Supplied at 0.5 mg/ml in Tris saline, 0.02% sodium azide, pH7.3 with 0.5% bovine serum albumin.

Aliquot and store at -20°C. Minimize freezing and thawing.

Applications Tested

Peptide ELISA: antibody detection limit dilution 1:128000.

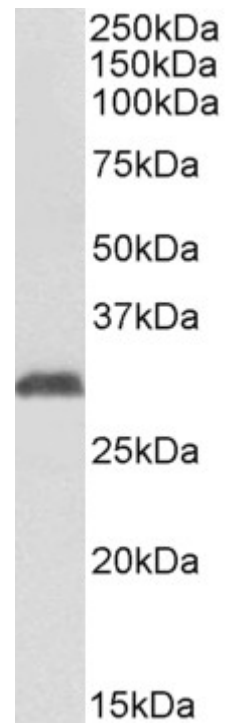
Western blot: Approx 30kDa band observed in Human Erythrocytes lysates (calculated MW of 33.9kDa according to NP_000653.3). Recommended concentration: 1-3µg/ml.

IHC: Paraffin embedded Human Urethra. Recommended concentration: 5µg/ml.

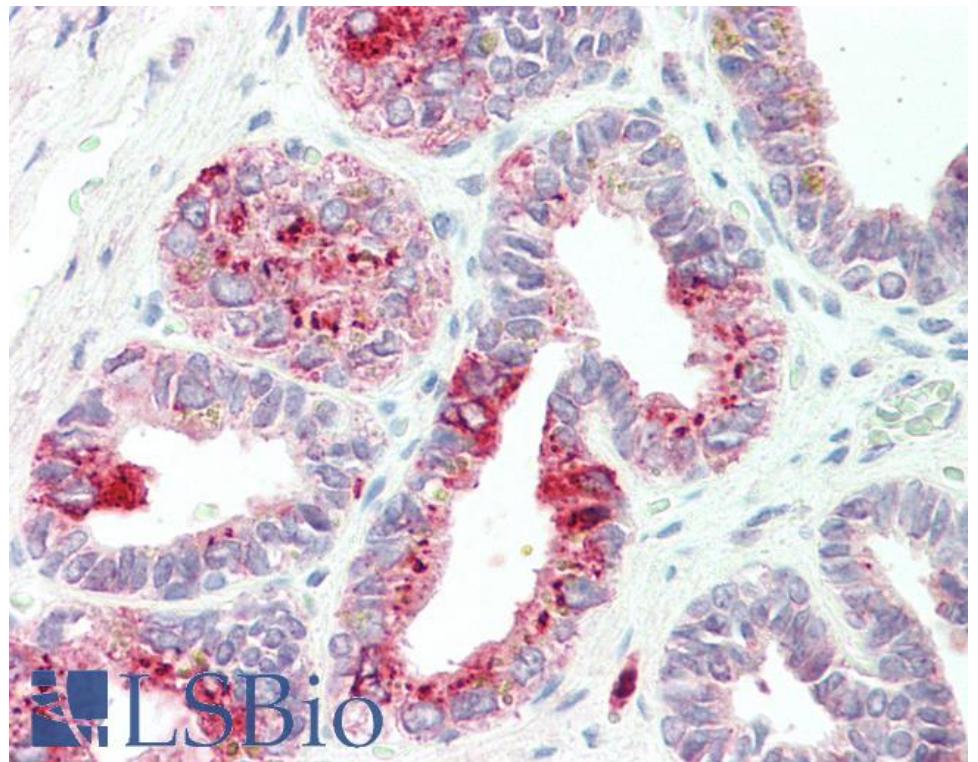
Species Reactivity

Tested: Human

Expected from sequence similarity: Human



EB12304 (1µg/ml) staining of Human Erythrocytes lysate (35µg protein in RIPA buffer). Primary incubation was 1 hour. Detected by chemiluminescence.



EB12304 (5µg/ml) staining of paraffin embedded Human Urethra. Steamed antigen retrieval with citrate buffer Ph 6, AP-staining.