

UK Office

Everest Biotech Ltd

Cherwell Innovation Centre
77 Heyford Park
Upper Heyford
Oxfordshire
OX25 5HD
UK

Enquiries:

info@everestbiotech.com

Sales:

sales@everestbiotech.com

Tech support:

support@everestbiotech.com

Tel: +44 (0)1869 238326

www.everestbiotech.com

**Research Use Only. Not for
diagnostic or therapeutic use.**

EB11473 - Goat Anti-Nalp10 / Nlrp10 (mouse) Antibody

Size: 100µg specific antibody in 200µl



Target Protein

Principal Names: 6430548I20Rik, NACHT, leucine rich repeat and PYD containing 10, NACHT, LRR and PYD containing protein 10, NACHT, LRR and PYD domains-containing protein 10, NACHT/LRR/pyrin domain-containing protein 10, Nalp10, Napl10, neuronal apoptosis inhibitor protein 10, NLR family, pyrin domain containing 10, Nlrp10, PAN5, Pynod

Official Symbol: Nlrp10

Accession Number(s): NP_780741.1

Non-Human GeneID(s): 244202 (mouse), 293426 (rat)

Immunogen

Peptide with sequence NDLEENSFKTLKFH-C, from the N Terminus of the protein sequence according to NP_780741.1.

Please note the [peptide](#) is available for sale.

Purification and Storage

Purified from goat serum by ammonium sulphate precipitation followed by antigen affinity chromatography using the immunizing peptide.

Supplied at 0.5 mg/ml in Tris saline, 0.02% sodium azide, pH7.3 with 0.5% bovine serum albumin.

Aliquot and store at -20°C. Minimize freezing and thawing.

Applications Tested

Peptide ELISA: antibody detection limit dilution 1:128000.

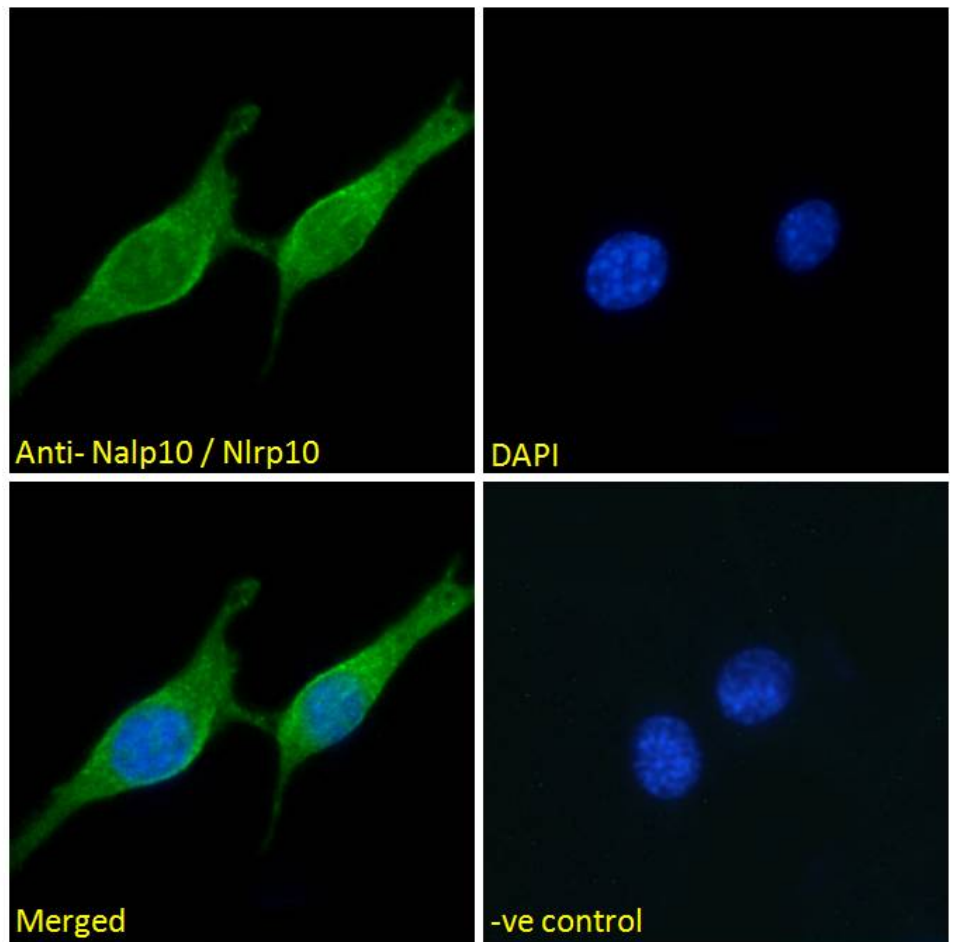
Immunofluorescence: Strong expression of the protein seen in the cytoplasm of NIH3T3 cells. Recommended concentration: 10µg/ml.

Flow Cytometry: Flow cytometric analysis of NIH3T3 cells. Recommended concentration: 10ug/ml.

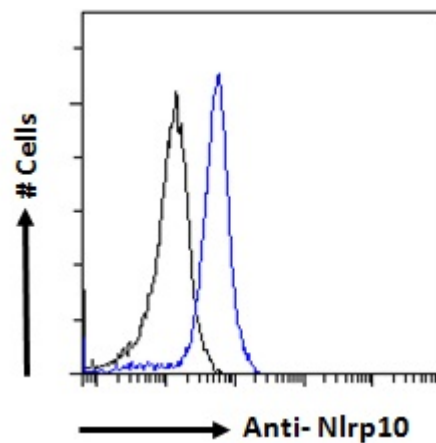
Species Reactivity

Tested: Mouse

Expected from sequence similarity: Mouse, Rat



EB11473 Immunofluorescence analysis of paraformaldehyde fixed NIH3T3 cells, permeabilized with 0.15% Triton. Primary incubation 1hr (10ug/ml) followed by Alexa Fluor 488 secondary antibody (2ug/ml), showing cytoplasmic staining. The nuclear stain is DAPI (blue). Negative control: Unimmunized goat IgG (10ug/ml) followed by Alexa Fluor 488 secondary antibody (2ug/ml).



EB11473 Flow cytometric analysis of paraformaldehyde fixed NIH3T3 cells (blue line), permeabilized with 0.5% Triton. Primary incubation 1hr (10ug/ml) followed by Alexa Fluor 488 secondary antibody (1ug/ml). IgG control: Unimmunized goat IgG (black line) followed by Alexa Fluor 488 secondary antibody.