



UK Office

Everest Biotech Ltd

Cherwell Innovation Centre
77 Heyford Park
Upper Heyford
Oxfordshire
OX25 5HD
UK

Enquiries:

info@everestbiotech.com

Sales:

sales@everestbiotech.com

Tech support:

support@everestbiotech.com

Tel: +44 (0)1869 238326

www.everestbiotech.com

**Research Use Only. Not for
diagnostic or therapeutic use.**

EB11898 - Goat Anti-myotilin (aa209-221) Antibody

Size: 100µg specific antibody in 200µl

Target Protein

Principal Names: MYOT, myotilin, LGMD1, LGMD1A, TTID, 57 kDa cytoskeletal protein, OTTHUMP00000159430, OTTHUMP00000223460, OTTHUMP00000223461, myofibrillar titin-like Ig domains protein, titin immunoglobulin domain protein (myotilin)

Official Symbol: MYOT

Accession Number(s): NP_006781.1; NP_001129412.1

Human GeneID(s): [9499](#)

Important Comments: This antibody is expected to recognize both reported isoforms (NP_006781.1; NP_001129412.1).

Immunogen

Peptide with sequence C-DSQQHNSEHARLQ, from the internal region of the protein sequence according to NP_006781.1; NP_001129412.1.

Please note the [peptide](#) is available for sale.

Purification and Storage

Purified from goat serum by ammonium sulphate precipitation followed by antigen affinity chromatography using the immunizing peptide.

Supplied at 0.5 mg/ml in Tris saline, 0.02% sodium azide, pH7.3 with 0.5% bovine serum albumin.

Aliquot and store at -20°C. Minimize freezing and thawing.

Applications Tested

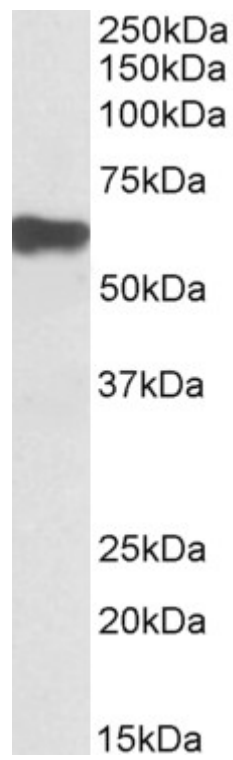
Peptide ELISA: antibody detection limit dilution 1:128000.

Western blot: Approx 60kDa band observed in Human Skeletal Muscle lysates (calculated MW of 55.4kDa according to NP_006781.1. Recommended concentration: 0.1-0.3µg/ml.

Species Reactivity

Tested: Human

Expected from sequence similarity: Human



EB11898 (0.1 μ g/ml) staining of Human Skeletal Muscle lysate (35 μ g protein in RIPA buffer). Primary incubation was 1 hour. Detected by chemiluminescence.