



UK Office

Everest Biotech Ltd

Cherwell Innovation Centre
77 Heyford Park
Upper Heyford
Oxfordshire
OX25 5HD
UK

Enquiries:

info@everestbiotech.com

Sales:

sales@everestbiotech.com

Tech support:

support@everestbiotech.com

Tel: +44 (0)1869 238326

www.everestbiotech.com

**Research Use Only. Not for
diagnostic or therapeutic use.**

EB06329 - Goat Anti-MUTYH Antibody

Size: 100µg specific antibody in 200µl



Target Protein

Principal Names: MUTYH, MYH, mutY homolog (E. coli), mutY (E. coli) homolog, RP4-534D1.2, CYP2C, MGC4416, A/G-specific adenine DNA glycosylase, OTTHUMP00000009098, OTTHUMP00000009102, mutY homolog

Official Symbol: MUTYH

Accession Number(s): NP_036354.1; NP_001041636.1; NP_001041637.1; NP_001041638.1; NP_001121897.1

Human GeneID(s): [4595](#)

Important Comments: This antibody is expected to recognise all reported isoforms (NP_036354.1; NP_001041636.1; NP_001041637.1; NP_001041638.1; NP_001121897.1). Reported variants represent identical protein (NP_001041638.1; NP_001041639.1).

Immunogen

Peptide with sequence C-HISTDAHSLNSAAQ, from the C Terminus of the protein sequence according to NP_036354.1; NP_001041636.1; NP_001041637.1; NP_001041638.1; NP_001121897.1.

Please note the [peptide](#) is available for sale.

Purification and Storage

Purified from goat serum by ammonium sulphate precipitation followed by antigen affinity chromatography using the immunizing peptide.

Supplied at 0.5 mg/ml in Tris saline, 0.02% sodium azide, pH7.3 with 0.5% bovine serum albumin.

Aliquot and store at -20°C. Minimize freezing and thawing.

Applications Tested

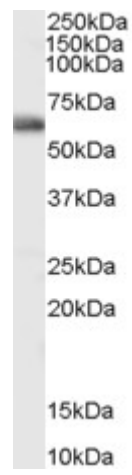
Peptide ELISA: antibody detection limit dilution 1:16000.

Western blot: Approx 60kDa band observed in Human Bone Marrow lysates (calculated MW of 60.0kDa according to NP_036354.1). Recommended concentration: 0.1-0.3µg/ml.

Species Reactivity

Tested: Human

Expected from sequence similarity: Human



EB06329 (0.1 µg/ml) staining of Human Bone Marrow lysate (35 µg protein in RIPA buffer). Primary incubation was 1 hour. Detected by chemiluminescence.