



## UK Office

### Everest Biotech Ltd

Cherwell Innovation Centre  
77 Heyford Park  
Upper Heyford  
Oxfordshire  
OX25 5HD  
UK

Enquiries:

[info@everestbiotech.com](mailto:info@everestbiotech.com)

Sales:

[sales@everestbiotech.com](mailto:sales@everestbiotech.com)

Tech support:

[support@everestbiotech.com](mailto:support@everestbiotech.com)

Tel: +44 (0)1869 238326

[www.everestbiotech.com](http://www.everestbiotech.com)

**Research Use Only. Not for  
diagnostic or therapeutic use.**

## EB05689 - Goat Anti-MRPL3 Antibody

Size: 100µg specific antibody in 200µl



### Target Protein

**Principal Names:** MRPL3, mitochondrial ribosomal protein L3, MRL3, RPML3, ribosomal protein, mitochondrial, L3, mitochondrial 60S ribosomal protein L3

**Official Symbol:** MRPL3

**Accession Number(s):** NP\_009139.1

**Human GeneID(s):** [11222](#)

### Immunogen

Peptide with sequence NVCQPGAPSITFA, from the C Terminus of the protein sequence according to NP\_009139.1.

Please note the [peptide](#) is available for sale.

### Purification and Storage

Purified from goat serum by ammonium sulphate precipitation followed by antigen affinity chromatography using the immunizing peptide.

Supplied at 0.5 mg/ml in Tris saline, 0.02% sodium azide, pH7.3 with 0.5% bovine serum albumin.

Aliquot and store at -20°C. Minimize freezing and thawing.

### Applications Tested

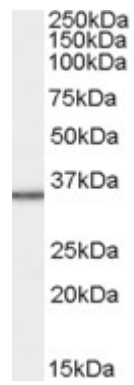
**Peptide ELISA:** antibody detection limit dilution 1:32000.

**Western blot:** Approx 35kDa band observed in lysates of cell line HepG2 (calculated MW of 38.6kDa according to NP\_009139.1). Recommended concentration: 1-3µg/ml.

### Species Reactivity

**Tested:** Human

**Expected from sequence similarity:** Human, Pig, Cow



EB05689 staining (1µg/ml) of HepG2 cell lysate (RIPA buffer, 35µg total protein per lane). Primary incubated for 1 hour. Detected by western blot using chemiluminescence.