



## UK Office

### Everest Biotech Ltd

Cherwell Innovation Centre  
77 Heyford Park  
Upper Heyford  
Oxfordshire  
OX25 5HD  
UK

Enquiries:

[info@everestbiotech.com](mailto:info@everestbiotech.com)

Sales:

[sales@everestbiotech.com](mailto:sales@everestbiotech.com)

Tech support:

[support@everestbiotech.com](mailto:support@everestbiotech.com)

Tel: +44 (0)1869 238326

[www.everestbiotech.com](http://www.everestbiotech.com)

**Research Use Only. Not for  
diagnostic or therapeutic use.**

## EB10432 - Goat Anti-MPV17 Antibody

Size: 100µg specific antibody in 200µl



### Target Protein

**Principal Names:** Mpv17 mitochondrial inner membrane protein, Mpv17 protein, Mpv17, human homolog of glomerulosclerosis and nephrotic syndrome, OTTHUMP00000122591, SYM1, MPV17

**Official Symbol:** MPV17

**Accession Number(s):** NP\_002428.1

**Human GeneID(s):** [4358](#)

**Non-Human GeneID(s):** 17527 (mouse), 360463 (rat)

### Immunogen

Peptide with sequence C-QRALAAHPWKVQ, from the internal region of the protein sequence according to NP\_002428.1.

Please note the [peptide](#) is available for sale.

### Purification and Storage

Purified from goat serum by ammonium sulphate precipitation followed by antigen affinity chromatography using the immunizing peptide.

Supplied at 0.5 mg/ml in Tris saline, 0.02% sodium azide, pH7.3 with 0.5% bovine serum albumin.

Aliquot and store at -20°C. Minimize freezing and thawing.

### Applications Tested

**Peptide ELISA:** antibody detection limit dilution 1:32000.

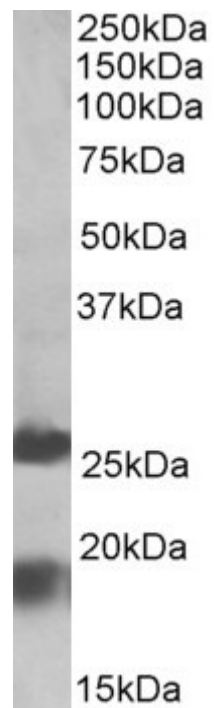
**Western blot:** Approx 19kDa band observed in Human Brain (Frontal Cortex) lysates (calculated MW of 19.7kDa according to NP\_002428.1). Recommended concentration: 1-3µg/ml. An additional band of unknown identity was also consistently observed at 26kDa. This band was successfully blocked by incubation with the immunizing peptide. We would appreciate any feedback from people in the field - have any such results been reported with other antibodies/lysates? Have any further splice variants/modified forms been reported?

**IHC:** In paraffin embedded Human Liver shows heavy textured cytoplasm staining in hepatocytes, consistent with mitochondria.. Recommended concentration, 5-10µg/ml.

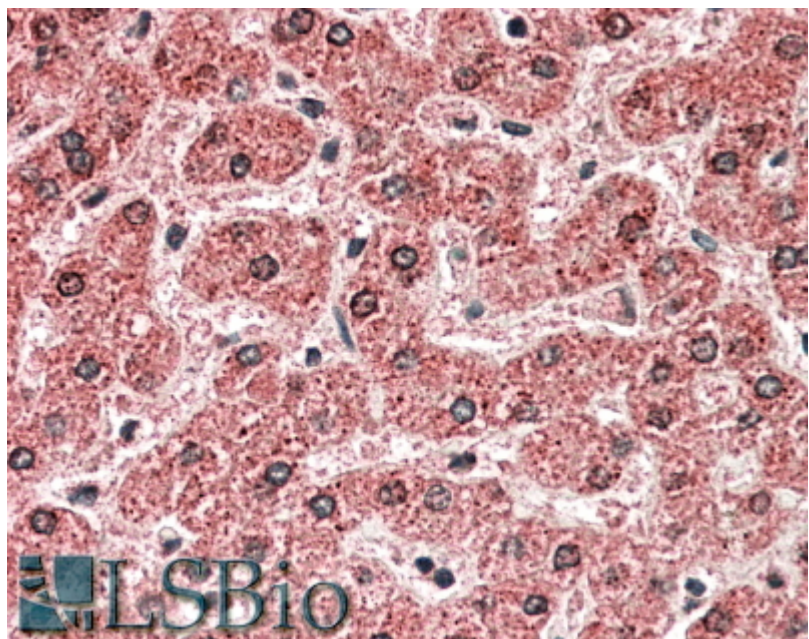
### Species Reactivity

**Tested:** Human

**Expected from sequence similarity:** Human, Mouse, Rat, Dog, Cow



EB10432 (2 $\mu$ g/ml) staining of Human Frontal Cortex lysate (35 $\mu$ g protein in RIPA buffer). Primary incubation was 1 hour. Detected by chemiluminescence.



EB10432 (5 $\mu$ g/ml) staining of paraffin embedded Human Liver. Steamed antigen retrieval with citrate buffer pH 6, AP-staining.