



UK Office

Everest Biotech Ltd

Cherwell Innovation Centre
77 Heyford Park
Upper Heyford
Oxfordshire
OX25 5HD
UK

Enquiries:

info@everestbiotech.com

Sales:

sales@everestbiotech.com

Tech support:

support@everestbiotech.com

Tel: +44 (0)1869 238326

www.everestbiotech.com

**Research Use Only. Not for
diagnostic or therapeutic use.**

EB09846 - Goat Anti-MMP12 Antibody

Size: 100µg specific antibody in 200µl



Target Protein

Principal Names: HME, macrophage elastase, macrophage metalloelastase, matrix metalloproteinase 12 (macrophage elastase), matrix metalloproteinase 12, matrix metalloproteinase 12 (macrophage elastase), MGC138506, MME, MMP12

Official Symbol: MMP12

Accession Number(s): NP_002417.2

Human GeneID(s): [4321](#)

Immunogen

Peptide with sequence C-RPKTSVNLISS, from the internal region of the protein sequence according to NP_002417.2.

Please note the [peptide](#) is available for sale.

Purification and Storage

Purified from goat serum by ammonium sulphate precipitation followed by antigen affinity chromatography using the immunizing peptide.

Supplied at 0.5 mg/ml in Tris saline, 0.02% sodium azide, pH7.3 with 0.5% bovine serum albumin.

Aliquot and store at -20°C. Minimize freezing and thawing.

Applications Tested

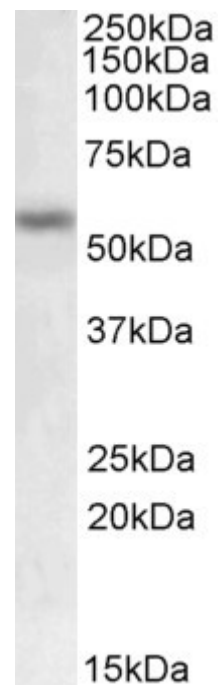
Peptide ELISA: antibody detection limit dilution 1:4000.

Western blot: Approx 55kDa band observed in Human Breast Cancer lysates (calculated MW of 54.0kDa according to NP_002417.2). Recommended concentration: 0.3-1µg/ml.

Species Reactivity

Tested: Human

Expected from sequence similarity: Human, Dog, Cow



EB09846 (0.5µg/ml) staining of Human Breast Cancer lysate (35µg protein in RIPA buffer). Primary incubation was 1 hour. Detected by chemiluminescence.