



UK Office

Everest Biotech Ltd

Cherwell Innovation Centre
77 Heyford Park
Upper Heyford
Oxfordshire
OX25 5HD
UK

Enquiries:

info@everestbiotech.com

Sales:

sales@everestbiotech.com

Tech support:

support@everestbiotech.com

Tel: +44 (0)1869 238326

www.everestbiotech.com

**Research Use Only. Not for
diagnostic or therapeutic use.**

EB05504 - Goat Anti-MAGOH Antibody

Size: 100µg specific antibody in 200µl



Target Protein

Principal Names: MAGOH, mago-nashi homolog, proliferation-associated (Drosophila), RP5-1024G6.4, MAGOHA

Official Symbol: MAGOH

Accession Number(s): NP_002361.1

Human GeneID(s): [4116](#)

Non-Human GeneID(s): 17149 (mouse)

Immunogen

Peptide with sequence C-SLIGLHFKIKPI, from the C Terminus of the protein sequence according to NP_002361.1.

Please note the [peptide](#) is available for sale.

Purification and Storage

Purified from goat serum by ammonium sulphate precipitation followed by antigen affinity chromatography using the immunizing peptide.

Supplied at 0.5 mg/ml in Tris saline, 0.02% sodium azide, pH7.3 with 0.5% bovine serum albumin.

Aliquot and store at -20°C. Minimize freezing and thawing.

Applications Tested

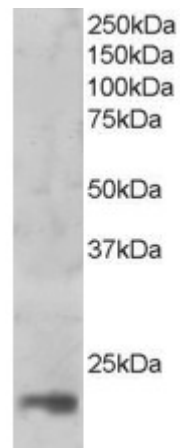
Peptide ELISA: antibody detection limit dilution 1:2000.

Western blot: Approx 17kDa band observed in nuclear lysates of cell line HeLa (calculated MW of 17.2kDa according to NP_002361.1). Recommended concentration: 1-3µg/ml. (Data obtained from a previous batch).

Species Reactivity

Tested: Human

Expected from sequence similarity: Human, Mouse, Rat, Dog, Cow



EB05504 (1ug/ml) staining of nuclear HeLa lysate (35µg protein in RIPA buffer). Primary incubation was 1 hour.
Detected by chemiluminescence.