



UK Office

Everest Biotech Ltd

Cherwell Innovation Centre
77 Heyford Park
Upper Heyford
Oxfordshire
OX25 5HD
UK

Enquiries:

info@everestbiotech.com

Sales:

sales@everestbiotech.com

Tech support:

support@everestbiotech.com

Tel: +44 (0)1869 238326

www.everestbiotech.com

**Research Use Only. Not for
diagnostic or therapeutic use.**

EB08538 - Goat Anti-KPNA6 Antibody

Size: 100µg specific antibody in 200µl



Target Protein

Principal Names: KPNA6, karyopherin alpha 6 (importin alpha 7), FLJ11249, IPOA7, KPNA7, MGC17918, importin alpha 7 subunit, importin-alpha-S2, karyopherin alpha 6

Official Symbol: KPNA6

Accession Number(s): NP_036448.1

Human GeneID(s): [23633](#)

Non-Human GeneID(s): 16650 (mouse), 362607 (rat)

Immunogen

Peptide with sequence C-STTGESVITREMVE, from the internal of the protein sequence according to NP_036448.1.

Please note the [peptide](#) is available for sale.

Purification and Storage

Purified from goat serum by ammonium sulphate precipitation followed by antigen affinity chromatography using the immunizing peptide.

Supplied at 0.5 mg/ml in Tris saline, 0.02% sodium azide, pH7.3 with 0.5% bovine serum albumin.

Aliquot and store at -20°C. Minimize freezing and thawing.

Applications Tested

Peptide ELISA: antibody detection limit dilution 1:128000.

Western blot: Approx 60kDa band observed in Human Skeletal Muscle lysates (calculated MW of 60.0kDa according to NP_036448.1). Recommended concentration: 0.1-0.3µg/ml. Some minor background is detected and is blocked by the immunizing peptide. We call for caution when used for other assays than Western blot.

IHC: In paraffin embedded Human Adrenal Gland shows staining of cytoplasm and some nuclear membrane (nuclear pores). Recommended concentration, 3-6µg/ml.

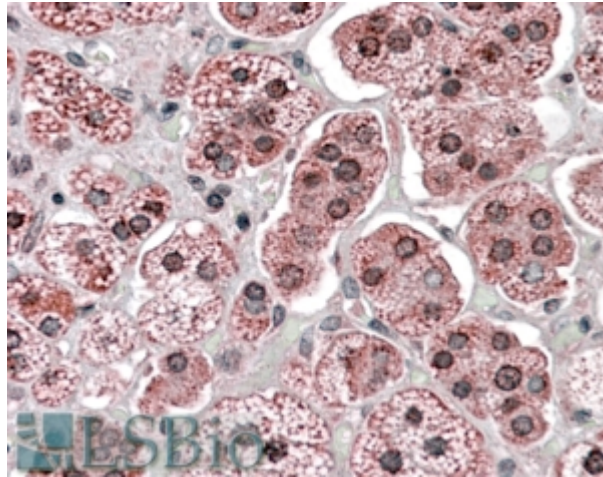
Species Reactivity

Tested: Human

Expected from sequence similarity: Human, Mouse, Rat, Dog, Pig, Cow



EB08538 (0.1 μ g/ml) staining of Human Muscle lysate (35 μ g protein in RIPA buffer). Primary incubation was 1 hour. Detected by chemiluminescence.



EB08538 (3.8 μ g/ml) staining of paraffin embedded Human Adrenal Gland. Steamed antigen retrieval with citrate buffer pH 6, AP-staining.