



UK Office

Everest Biotech Ltd

Cherwell Innovation Centre
77 Heyford Park
Upper Heyford
Oxfordshire
OX25 5HD
UK

Enquiries:

info@everestbiotech.com

Sales:

sales@everestbiotech.com

Tech support:

support@everestbiotech.com

Tel: +44 (0)1869 238326

www.everestbiotech.com

**Research Use Only. Not for
diagnostic or therapeutic use.**

EB05466 - Goat Anti-KLF16 / DRRF Antibody

Size: 100µg specific antibody in 200µl



Target Protein

Principal Names: KLF16, DRRF, BTEB4, NSLP2, Kruppel-like factor 16, BTE-binding protein 4, dopamine receptor regulating factor, basic transcription element binding protein 4

Official Symbol: KLF16

Accession Number(s): NP_114124.1

Human GeneID(s): [83855](#)

Immunogen

Peptide with sequence C-PAPSPAPSPAPAGL, from the C Terminus of the protein sequence according to NP_114124.1.

Please note the [peptide](#) is available for sale.

Purification and Storage

Purified from goat serum by ammonium sulphate precipitation followed by antigen affinity chromatography using the immunizing peptide.

Supplied at 0.5 mg/ml in Tris saline, 0.02% sodium azide, pH7.3 with 0.5% bovine serum albumin.

Aliquot and store at -20°C. Minimize freezing and thawing.

Applications Tested

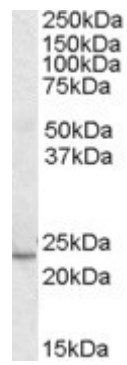
Peptide ELISA: antibody detection limit dilution 1:32000.

Western blot: Approx .24kDa band observed in Human Heart lysates (calculated MW of 25.4kDa according to NP_114124.1). Recommended concentration: 0.3-1µg/ml.

Species Reactivity

Tested: Human

Expected from sequence similarity: Human, Mouse, Rat, Dog, Cow



EB05466 (0.3µg/ml) staining of Human Heart lysate (35µg protein in RIPA buffer). Primary incubation was 1 hour. Detected by chemiluminescence.