



## UK Office

### Everest Biotech Ltd

Cherwell Innovation Centre  
77 Heyford Park  
Upper Heyford  
Oxfordshire  
OX25 5HD  
UK

Enquiries:

[info@everestbiotech.com](mailto:info@everestbiotech.com)

Sales:

[sales@everestbiotech.com](mailto:sales@everestbiotech.com)

Tech support:

[support@everestbiotech.com](mailto:support@everestbiotech.com)

Tel: +44 (0)1869 238326

[www.everestbiotech.com](http://www.everestbiotech.com)

**Research Use Only. Not for  
diagnostic or therapeutic use.**

## EB08200 - Goat Anti-HADH / HADHSC Antibody

Size: 100µg specific antibody in 200µl



### Target Protein

**Principal Names:** HADH, HADHSC, hydroxyacyl-Coenzyme A dehydrogenase, HAD, HADH1, HHF4, M/SCHAD, MGC8392, SCHAD, L-3-hydroxyacyl-Coenzyme A dehydrogenase, L-3-hydroxyacyl-Coenzyme A dehydrogenase, short chain

**Official Symbol:** HADH

**Accession Number(s):** NP\_005318.2

**Human GeneID(s):** [3033](#)

**Non-Human GeneID(s):** 15107 (mouse)

### Immunogen

Peptide with sequence C-YERGDASKEDID, from the internal region of the protein sequence according to NP\_005318.2.

Please note the [peptide](#) is available for sale.

### Purification and Storage

Purified from goat serum by ammonium sulphate precipitation followed by antigen affinity chromatography using the immunizing peptide.

Supplied at 0.5 mg/ml in Tris saline, 0.02% sodium azide, pH7.3 with 0.5% bovine serum albumin.

Aliquot and store at -20°C. Minimize freezing and thawing.

### Applications Tested

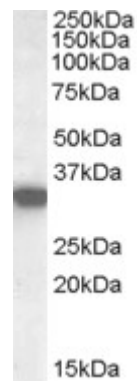
**Peptide ELISA:** antibody detection limit dilution 1:64000.

**Western blot:** Approx. 33kDa band observed in Human Heart, Muscle and Kidney lysates (calculated MW of 34.3kDa according to NP\_005318.2). In transfected HEK293 transiently expressing HADH a band of approx. 38kDa is observed. This band is not observed in the non-transfected HEK293. Recommended concentration: 0.01-0.03µg/ml.

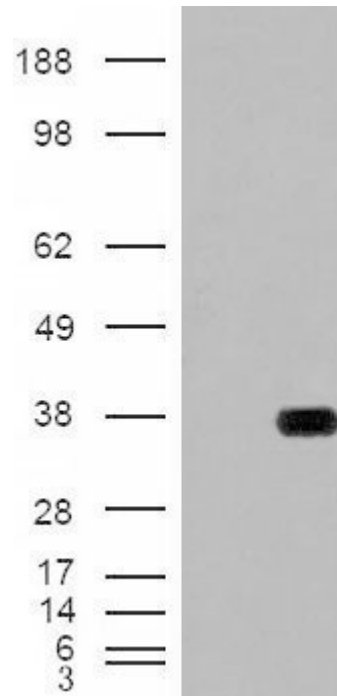
### Species Reactivity

**Tested:** Human

**Expected from sequence similarity:** Human, Mouse, Rat, Dog



EB08200 (0.02µg/ml) staining of Human Kidney lysate (35µg protein in RIPA buffer). Primary incubation was 1 hour. Detected by chemiluminescence.



HEK293 overexpressing HADH (RC201752) with C-terminal tag (DYKDDDDK) and probed with anti-DYKDDDDK in the left panel and with EB08200 in the right panel (mock transfection in first and last lanes), tested by Origene.