

UK Office

Everest Biotech Ltd

Cherwell Innovation Centre
77 Heyford Park
Upper Heyford
Oxfordshire
OX25 5HD
UK

Enquiries:

info@everestbiotech.com

Sales:

sales@everestbiotech.com

Tech support:

support@everestbiotech.com

Tel: +44 (0)1869 238326

www.everestbiotech.com

**Research Use Only. Not for
diagnostic or therapeutic use.**

EB06606 - Goat Anti-GSTM1 / GSTM2 Antibody

Size: 100µg specific antibody in 200µl



Target Protein

Principal Names: GSTM1, GSTM2, MU, H-B, GST1, GTH4, GTM1, MU-1, GSTM1-1, MGC26563, GSTM1a-1a, GSTM1b-1b, glutathione S-transferase M1, HB subunit 4, GST class-mu 1, glutathione S-aryltransferase, glutathione S-alkyltransferase, glutathione S-transferase, Mu-1, glutathione S-aralkyltransferase, S-(hydroxyalkyl)glutathione lyase, glutathione S-transferase mu 1, glutathione S-transferase mu 2 (muscle), GST4, GSTM, GSTM2-2, GTHMUS, MGC117303, GST class-mu 2, GST, muscle, S-(hydroxyalkyl)glutathione lyase M2, glutathione S-alkyltransferase M2, glutathione S-aralkyltransferase M2, glutathione S-aryltransferase M2, glutathione S-transferase 4, glutathione S-transferase M1, glutathione S-transferase M2 (muscle), glutathione S-transferase mu 2

Official Symbol: GSTM1 / GSTM2

Accession Number(s): NP_000552.2; NP_666533.1; NP_000839.1

Human GeneID(s): [2944](#) , [2946](#)

Important Comments: This antibody is expected to recognise both reported variants of human GSTM1 protein (NP_000552.2; NP_666533.1) and will also recognise human GSTM2 protein (NP_000839.1).

Immunogen

Peptide with sequence CVFSKMAVWGNK, from the C Terminus of the protein sequence according to NP_000552.2; NP_666533.1; NP_000839.1.

Please note the [peptide](#) is available for sale.

Purification and Storage

Purified from goat serum by ammonium sulphate precipitation followed by antigen affinity chromatography using the immunizing peptide.

Supplied at 0.5 mg/ml in Tris saline, 0.02% sodium azide, pH7.3 with 0.5% bovine serum albumin.

Aliquot and store at -20°C. Minimize freezing and thawing.

Applications Tested

Peptide ELISA: antibody detection limit dilution 1:1000.

Western blot: Approx 26kDa band observed in Human Liver and Human Lung lysates (calculated MW of 25.7kDa according to NP_000552.2, and NP_000839.1).

Recommended concentration: 1-3µg/ml.

Species Reactivity

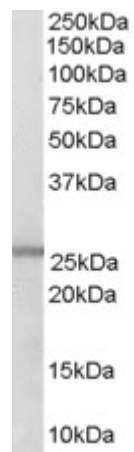
Tested: Human

Expected from sequence similarity: Human

Specific Reference

This antibody has been successfully used in the following paper:

Endo K, Uno S, Seki T, Ariga T, Kusumi Y, Mitsumata M, Yamada S, Makishima M. Inhibition of aryl hydrocarbon receptor transactivation and DNA adduct formation by CYP1 isoform-selective metabolic deactivation of benzo[a]pyrene. Toxicol Appl Pharmacol. 2008 Jul 15;230(2):135-43. Epub 2008 Feb 21. PMID: 18372000



EB06606 (0.3 μ g/ml) staining of Human Lung lysate (35 μ g protein in RIPA buffer). Primary incubation was 1 hour.
Detected by chemiluminescence.