

UK Office

Everest Biotech Ltd

Cherwell Innovation Centre
77 Heyford Park
Upper Heyford
Oxfordshire
OX25 5HD
UK

Enquiries:

info@everestbiotech.com

Sales:

sales@everestbiotech.com

Tech support:

support@everestbiotech.com

Tel: +44 (0)1869 238326

www.everestbiotech.com

**Research Use Only. Not for
diagnostic or therapeutic use.**

EB06925 - Goat Anti-GOLGA6 / GLP Antibody

Size: 100µg specific antibody in 200µl



Target Protein

Principal Names: GOLGA6, golgi autoantigen, golgin subfamily a, member 6, HGNC:13567, GLP, Golgi autoantigen, golgin subfamily a, 6, Golgin linked to PML, golgin-like protein, GOLGA6B, GOLGA, Golgin subfamily A member 6B

Official Symbol: GOLGA6B

Accession Number(s): NP_061122.4; NP_001033729.1

Human GeneID(s): [55889](#) , [342096](#)

Important Comments: GeneID 55889 may be a pseudogene, while GeneID 342096 is thought to encode a functional protein.

Immunogen

Peptide with sequence C-DLPKEKADGTEQ, from the internal region of the protein sequence according to NP_061122.4; NP_001033729.1.

Please note the [peptide](#) is available for sale.

Purification and Storage

Purified from goat serum by ammonium sulphate precipitation followed by antigen affinity chromatography using the immunizing peptide.

Supplied at 0.5 mg/ml in Tris saline, 0.02% sodium azide, pH7.3 with 0.5% bovine serum albumin.

Aliquot and store at -20°C. Minimize freezing and thawing.

Applications Tested

Peptide ELISA: antibody detection limit dilution 1:1000.

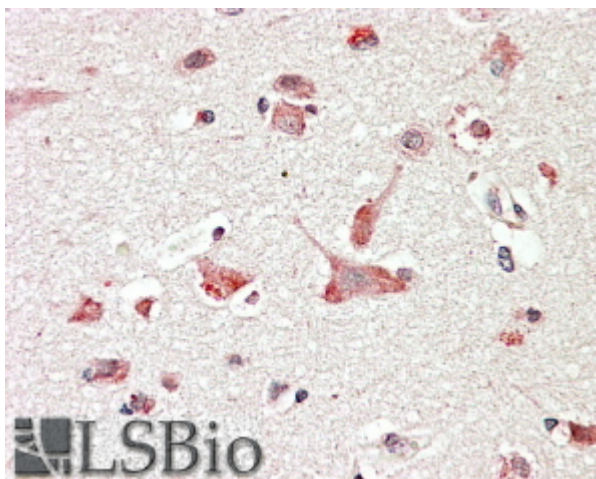
Western blot: Preliminary experiments gave an approx 45kDa band in human liver lysates after 1µg/ml antibody staining. Please note that currently we cannot find an explanation in the literature for the band we observe given the calculated size of 79.9kDa according to NP_001033729.1. The 45kDa band was successfully blocked by incubation with the immunizing peptide. We would appreciate any feedback from people in the field - have any results been reported with other antibodies/lysates? Have any further splice variants/modified forms been reported?

IHC: In paraffin embedded Human Cerebral Cortex shows localized cytoplasm staining consistent with Golgi. Recommended concentration, 3-6µg/ml.

Species Reactivity

Tested: Human

Expected from sequence similarity: Human



EB06925 (3.8µg/ml) staining of paraffin embedded Human Cerebral Cortex. Steamed antigen retrieval with citrate buffer pH 6, AP-staining.