

## UK Office

### Everest Biotech Ltd

Cherwell Innovation Centre  
77 Heyford Park  
Upper Heyford  
Oxfordshire  
OX25 5HD  
UK

Enquiries:

[info@everestbiotech.com](mailto:info@everestbiotech.com)

Sales:

[sales@everestbiotech.com](mailto:sales@everestbiotech.com)

Tech support:

[support@everestbiotech.com](mailto:support@everestbiotech.com)

Tel: +44 (0)1869 238326

[www.everestbiotech.com](http://www.everestbiotech.com)

**Research Use Only. Not for  
diagnostic or therapeutic use.**

## EB07187 - Goat Anti-GNB3 Antibody

Size: 100µg specific antibody in 200µl



### Target Protein

**Principal Names:** GNB3, guanine nucleotide binding protein (G protein), beta polypeptide 3, G protein, beta-3 subunit, GTP-binding regulatory protein beta-3 chain, guanine nucleotide-binding protein G(I)/G(S)/G(T) beta subunit 3, guanine nucleotide-binding protein, beta-3 subunit, hypertension associated protein, transducin beta chain 3

**Official Symbol:** GNB3

**Accession Number(s):** NP\_002066.1

**Human GeneID(s):** [2784](#)

**Important Comments:** No cross-reactivity expected with GNB1, 2 and 4

### Immunogen

Peptide with sequence DCMSLAVSPDFN, from the internal region of the protein sequence according to NP\_002066.1.

Please note the [peptide](#) is available for sale.

### Purification and Storage

Purified from goat serum by ammonium sulphate precipitation followed by antigen affinity chromatography using the immunizing peptide.

Supplied at 0.5 mg/ml in Tris saline, 0.02% sodium azide, pH7.3 with 0.5% bovine serum albumin.

Aliquot and store at -20°C. Minimize freezing and thawing.

### Applications Tested

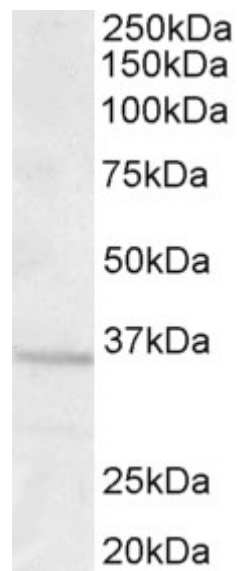
**Peptide ELISA:** antibody detection limit dilution 1:1000.

**Western blot:** Approx 36kDa band observed in Human Brain (Frontal Cortex) lysates (calculated MW of 37.2kDa according to NP\_002066.1). Recommended concentration: 1-3µg/ml.

### Species Reactivity

**Tested:** Human

**Expected from sequence similarity:** Human, Mouse, Rat, Dog, Cow



EB07187 (1.0µg/ml) staining of Human Brain (Frontal Cortex) lysate (35µg protein in RIPA buffer). Primary incubation was 1 hour. Detected by chemiluminescence.