

## UK Office

### Everest Biotech Ltd

Cherwell Innovation Centre  
77 Heyford Park  
Upper Heyford  
Oxfordshire  
OX25 5HD  
UK

Enquiries:

[info@everestbiotech.com](mailto:info@everestbiotech.com)

Sales:

[sales@everestbiotech.com](mailto:sales@everestbiotech.com)

Tech support:

[support@everestbiotech.com](mailto:support@everestbiotech.com)

Tel: +44 (0)1869 238326

[www.everestbiotech.com](http://www.everestbiotech.com)

**Research Use Only. Not for  
diagnostic or therapeutic use.**

## EB08000 - Goat Anti-GLuR5 / GRIK1 Antibody

Size: 100µg specific antibody in 200µl



### Target Protein

**Principal Names:** GLUR5, GRIK1, glutamate receptor, ionotropic, kainate 1, EAA3, EEA3, GLR5, excitatory amino acid receptor 3

**Official Symbol:** GRIK1

**Accession Number(s):** NP\_000821.1; NP\_783300.1

**Human GeneID(s):** [2897](#)

**Non-Human GeneID(s):** 14805 (mouse), 29559 (rat)

**Important Comments:** This antibody is expected to recognise both reported isoforms according to NP\_000821.1 and NP\_783300.1.

### Immunogen

Peptide with sequence QCKQTHPTNSTS, from the internal region (near the C Terminus) of the protein sequence according to NP\_000821.1; NP\_783300.1.

Please note the [peptide](#) is available for sale.

### Purification and Storage

Purified from goat serum by ammonium sulphate precipitation followed by antigen affinity chromatography using the immunizing peptide.

Supplied at 0.5 mg/ml in Tris saline, 0.02% sodium azide, pH7.3 with 0.5% bovine serum albumin.

Aliquot and store at -20°C. Minimize freezing and thawing.

### Applications Tested

**Peptide ELISA:** antibody detection limit dilution 1:8000.

**Western blot:** Approx 150kDa band observed in Human Brain (Cerebellum and Cerebral Cortex) lysates (calculated MW of 104kDa according to NP\_000821.1). The observed molecular weight corresponds to earlier findings in literature with different antibodies (Christensen et al, J Neurosci. 2004 Oct 13;24(41):8986-93.; PMID: 15483117).

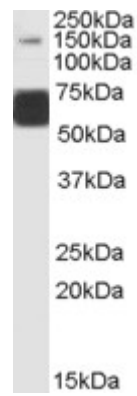
Recommended concentration: 1-3µg/ml. Primary incubation was 1 hour. An additional very strong band of unknown identity was also consistently observed at 60kDa. This band was successfully blocked by incubation with the immunising peptide.

**IHC:** Paraffin embedded Human Brain (Cortex). Recommended concentration: 3.75µg/ml.

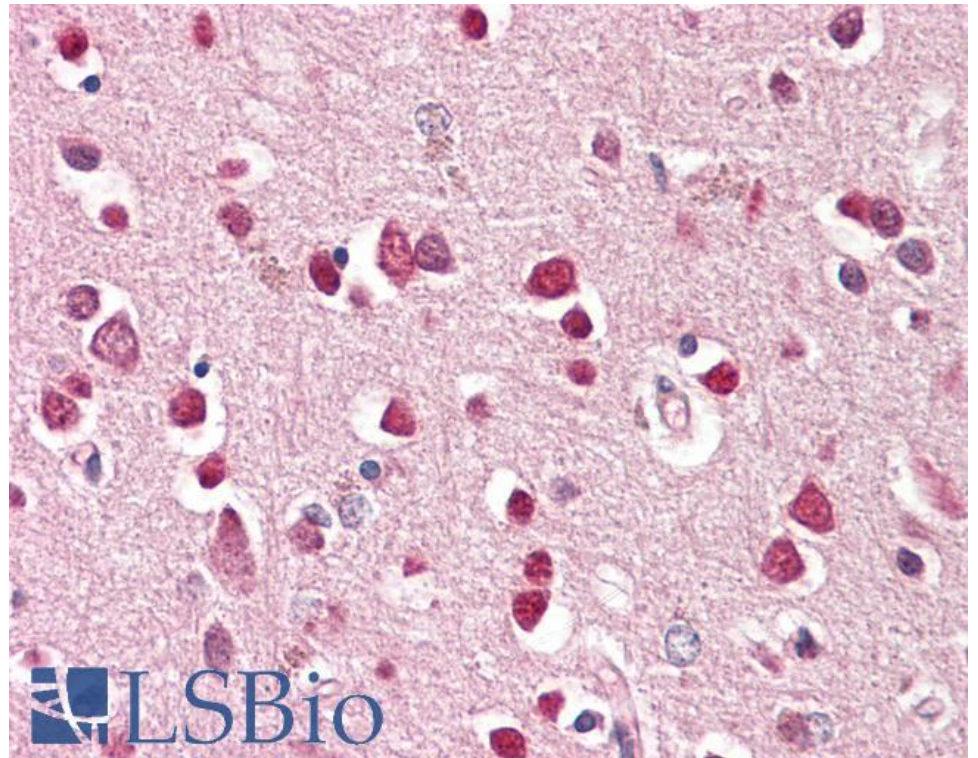
### Species Reactivity

**Tested:** Human

**Expected from sequence similarity:** Human, Mouse, Rat



EB08000 (1µg/ml) staining of Human Brain (Cerebellum) lysate (35µg protein in RIPA buffer). Detected by chemiluminescence.



EB08000 (3.75µg/ml) staining of paraffin embedded Human Cortex. Steamed antigen retrieval with citrate buffer pH 6, AP-staining.