

UK Office

Everest Biotech Ltd

Cherwell Innovation Centre
77 Heyford Park
Upper Heyford
Oxfordshire
OX25 5HD
UK

Enquiries:

info@everestbiotech.com

Sales:

sales@everestbiotech.com

Tech support:

support@everestbiotech.com

Tel: +44 (0)1869 238326

www.everestbiotech.com

**Research Use Only. Not for
diagnostic or therapeutic use.**

EB07109 - Goat Anti-FSD1 Antibody

Size: 100µg specific antibody in 200µl



Target Protein

Principal Names: FSD1, fibronectin type III and SPRY domain containing 1, HGNC:13745, MGC3213, MIR1, fibronectin type 3 and SPRY (spla, ryanodine) domain containing (with coiled-coil motif) 1, fibronectin type 3 and SPRY domain containing 1, fibronectin type 3 and SPRY domain-containing protein

Official Symbol: FSD1

Accession Number(s): NP_077309.1

Human GeneID(s): [79187](#)

Immunogen

Peptide with sequence C-KVQDIKAREKDGKGR, from the internal region of the protein sequence according to NP_077309.1.

Please note the [peptide](#) is available for sale.

Purification and Storage

Purified from goat serum by ammonium sulphate precipitation followed by antigen affinity chromatography using the immunizing peptide.

Supplied at 0.5 mg/ml in Tris saline, 0.02% sodium azide, pH7.3 with 0.5% bovine serum albumin.

Aliquot and store at -20°C. Minimize freezing and thawing.

Applications Tested

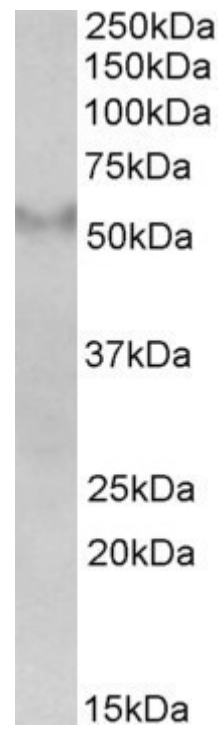
Peptide ELISA: antibody detection limit dilution 1:16000.

Western blot: Approx 55kDa band observed in Human Brain (Frontal Cortex) lysates (calculated MW of 55.8kDa according to NP_077309.1). Recommended concentration: 1-3µg/ml.

Species Reactivity

Tested: Human

Expected from sequence similarity: Human, Mouse, Rat, Dog, Cow



EB07109 (2 μ g/ml) staining of Human Frontal Cortex lysate (35 μ g protein in RIPA buffer). Primary incubation was 1 hour. Detected by chemiluminescence.