



## UK Office

### Everest Biotech Ltd

Cherwell Innovation Centre  
77 Heyford Park  
Upper Heyford  
Oxfordshire  
OX25 5HD  
UK

Enquiries:

[info@everestbiotech.com](mailto:info@everestbiotech.com)

Sales:

[sales@everestbiotech.com](mailto:sales@everestbiotech.com)

Tech support:

[support@everestbiotech.com](mailto:support@everestbiotech.com)

Tel: +44 (0)1869 238326

[www.everestbiotech.com](http://www.everestbiotech.com)

**Research Use Only. Not for  
diagnostic or therapeutic use.**

## EB06113 - Goat Anti-FANCG / XRCC9 Antibody

Size: 100µg specific antibody in 200µl



### Target Protein

**Principal Names:** FANCG, XRCC9, Fanconi anemia, complementation group G, FAG, DNA repair protein XRCC9, X-ray repair, complementing defective, in Chinese hamster, 9, X-ray repair complementing defective repair in Chinese hamster cells 9

**Official Symbol:** FANCG

**Accession Number(s):** NP\_004620.1

**Human GeneID(s):** [2189](#)

### Immunogen

Peptide with sequence LEEFRTSLPKSCDL, from the C Terminus of the protein sequence according to NP\_004620.1.

Please note the [peptide](#) is available for sale.

### Purification and Storage

Purified from goat serum by ammonium sulphate precipitation followed by antigen affinity chromatography using the immunizing peptide.

Supplied at 0.5 mg/ml in Tris saline, 0.02% sodium azide, pH7.3 with 0.5% bovine serum albumin.

Aliquot and store at -20°C. Minimize freezing and thawing.

### Applications Tested

**Peptide ELISA:** antibody detection limit dilution 1:32000.

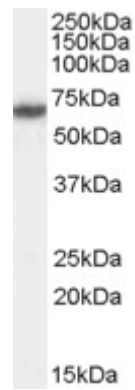
**Western blot:** Approx 70kDa band observed in lysates of cell line HeLa, and in nuclear lysates of cell line Jurkat (calculated MW of 68.6kDa according to NP\_004620.1). In transfected HEK293 transiently expressing FANCG a band of approx. 65kDa is observed. This band is not observed in the non-transfected HEK293. Recommended concentration: 0.3-1µg/ml.

**IHC:** Paraffin embedded Human Uterus and Spleen. Recommended concentration: 3µg/ml.

### Species Reactivity

**Tested:** Human

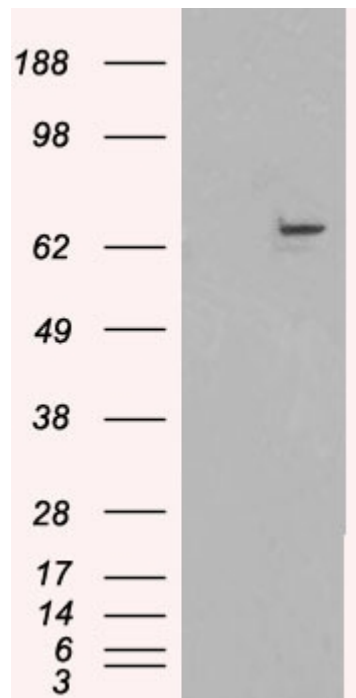
**Expected from sequence similarity:** Human



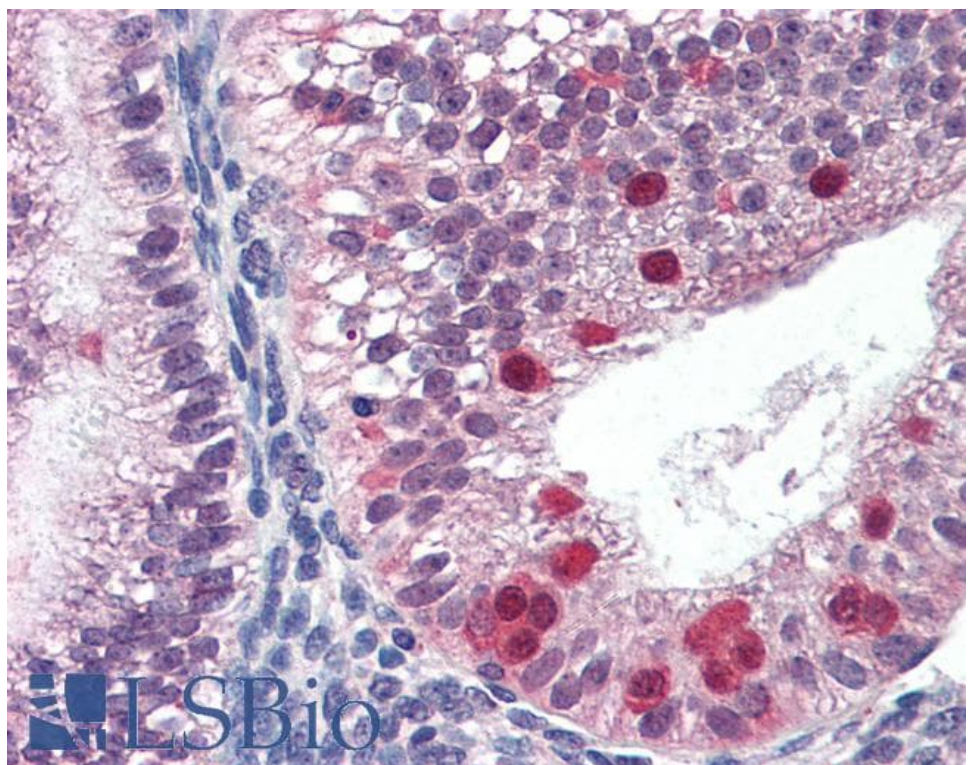
EB06113 (0.5 $\mu$ g/ml) staining of HeLa cell lysate (35 $\mu$ g protein in RIPA buffer). Primary incubation was 1 hour.  
Detected by chemiluminescence.



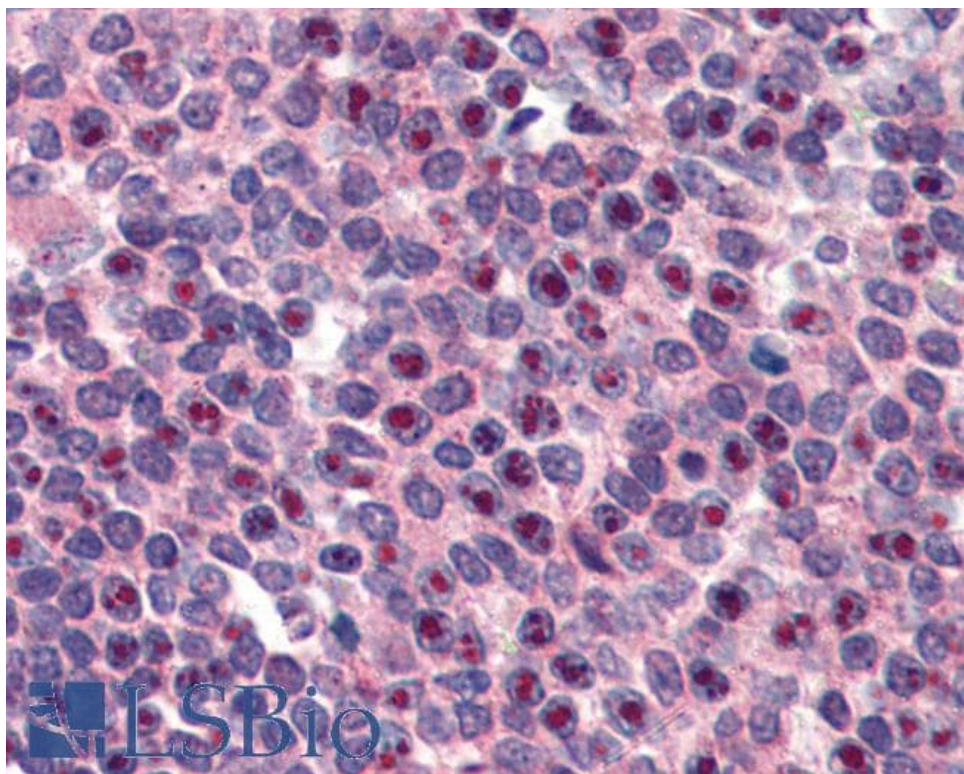
EB06113 (1 $\mu$ g/ml) staining of Jurkat nuclear lysate (35 $\mu$ g protein in RIPA buffer). Primary incubation was 1 hour.  
Detected by chemiluminescence.



HEK293 overexpressing FANCG (RC202443) and probed with EB06113 (mock transfection in first lane), tested by Origene.



EB06113 (3 $\mu$ g/ml) staining of paraffin embedded Human Uterus. Steamed antigen retrieval with citrate buffer pH 6, AP-staining.



EB06113 (3µg/ml) staining of paraffin embedded Human Spleen. Steamed antigen retrieval with citrate buffer pH 6, AP-staining.